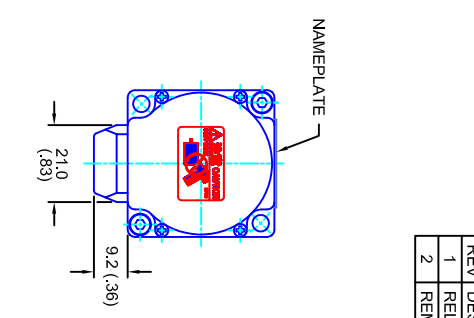
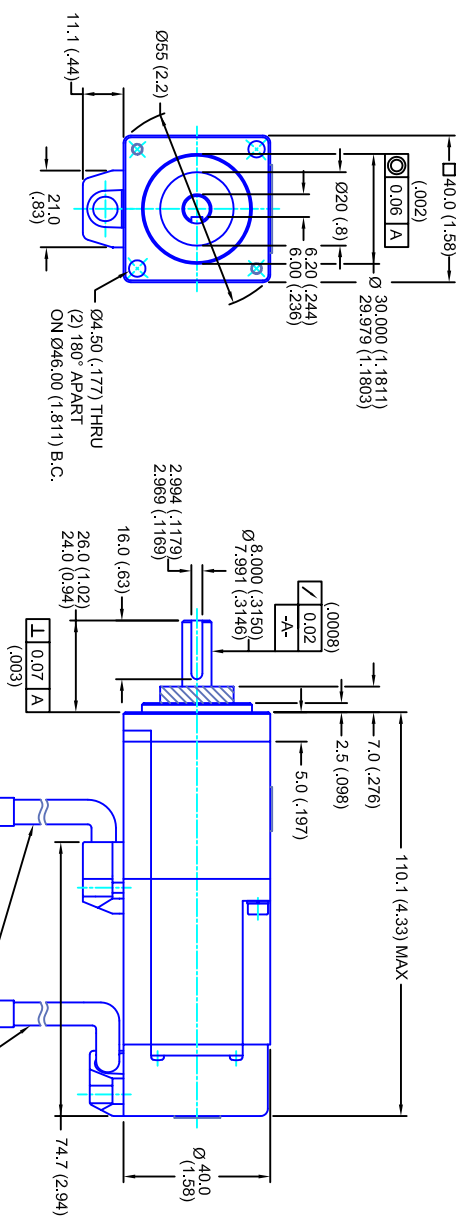


REVISIONS			
REV	DESCRIPTION	DATE	APPD
1	RELEASE DRAWING	11/29/03	
2	REMOVE THERM/UPDATE GEO	1/24/04	



MITRE/ENC/BRK LEADS
350 (13.8) - 250 (9.8) LONG

- MOTOR NOTES:**
1. MILLIMETERS (INCHES)
 2. AXIAL LOAD: 4 KG (8.8 LBS) MAX
 3. RADIAL LOAD: 8 KG (17.6 LBS) MAX @ 20MM (.787) FROM FACE
 4. MOTOR SEALED TO IP65
 5. MOTOR SHAFT: S45C STEEL
 6. MOTOR FINISH: SEMI GLOSS BLACK
 7. MOTOR WEIGHT: .7 KG [1.54 LBS]

ELECTRICAL DATA

MOTOR PARAMETERS	UNITS/MEASURE	VALUES
VOLTAGE	VOLTS-AC	230
AMP TYPE		SINE
HORSEPOWER	Hp	.13
KILOWATTS	KW	.10
MAX OPERATING SPEED	RPM	5000
SPEED @ RATED TORQUE	RPM	3000
*CONTINUOUS RATED TORQUE @ 3000 RPM	IN-LBS(INM)	2.81(.318)
*CONTINUOUS STALL TORQUE	IN-LBS(INM)	3.10(.350)
CONTINUOUS LINE CURRENT	AMPS(RMS) (A)	1.0
PEAK TORQUE	IN-LBS(INM)	8.4(.95)
PEAK CURRENT	AMPS(RMS) (A)	3.0
MAX THEORETICAL ACCEL.	RAD/SEC ²	158,491
TORQUE SENSITIVITY	KI	2.81(.318)
BACK EMF (LINE TO LINE)	Vrms/Krpm	17.6
D.C. RESISTANCE (P-P)	OHMS	20.3
INDUCTANCE (P-P)	MLLHENRIES	32
ROTOR INERTIA	Jm	.000053(.000006)
STATIC FRICTION	Tl	.18(.020)

ENCODER INFO:
5V - 2048L COMMUTATING

CONNECTION CHART
AMP -> 1-1318115-9 HSG
1318112-1 CONTACT

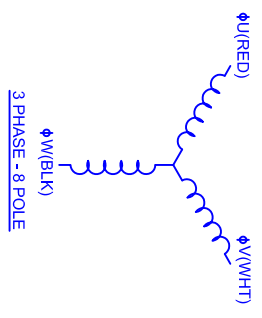
AMP -> 178964-3 HSG
175289-2 CONTACT

PIN	WIRE FUNCTION	WIRE COLOR
A1	CH A	BLU
A2	CH B	GRN
A3	CH Z	YEL
A4	-	-
A5	CH UE	BRN
A6	CH VE	GRY
A7	CH WE	WHT
A8	+5Vdc	RED
A9	-	-
A10	-	-
B1	CH AI	BLU/BLK
B2	CH BI	GRN/BLK
B3	CH ZI	YEL/BLK
B4	-	-
B5	CH UEI	BRN/BLK
B6	CH VEI	GRY/BLK
B7	CH WEI	WHT/BLK
B8	0V	BLK
B9	-	-
B10	SHLD	SHLD

PIN	WIRE FUNCTION	WIRE COLOR
A1	Φ U	RED
A2	Φ V	WHT
A3	Φ W	BLK
B1	PE GND	GRN/YEL
B2	BRK	YEL
B3	BRK	BLU

BRAKE INFO:

INPUT VOLTAGE: 24 VDC
HOLDING FORCE: .32 Nm [2.8 IN-LBS]
CURRENT DRAW: 0.21 AMPS
RELEASING TIME: 20 ms MAX



40MM - 3 STK
230V/KE-17.6/MET/2048/BRK

TOLERANCES UNLESS SPECIFIED			
BORE:	= H12		
DEGREE:	= 12		
DECIMAL .xxx	= .005		
DECIMAL .xx	= .010		
DECIMAL .x	= .020		
ANGLE (MM INCHES)	= .030		
REMOVE ALL BURRS/BREAK SHARP EDGES AS SHOWN (0.10°)			
FINISH:			
WATERIAL:			
SCALE	DRAWING NO.	CUSTOMER:	DRAWN: DFLA
1:1	11/29/03	TS4603N6407E200	CM403Q17.6MK2048CTB
			SHEET: 1 OF 1
			REV. 2