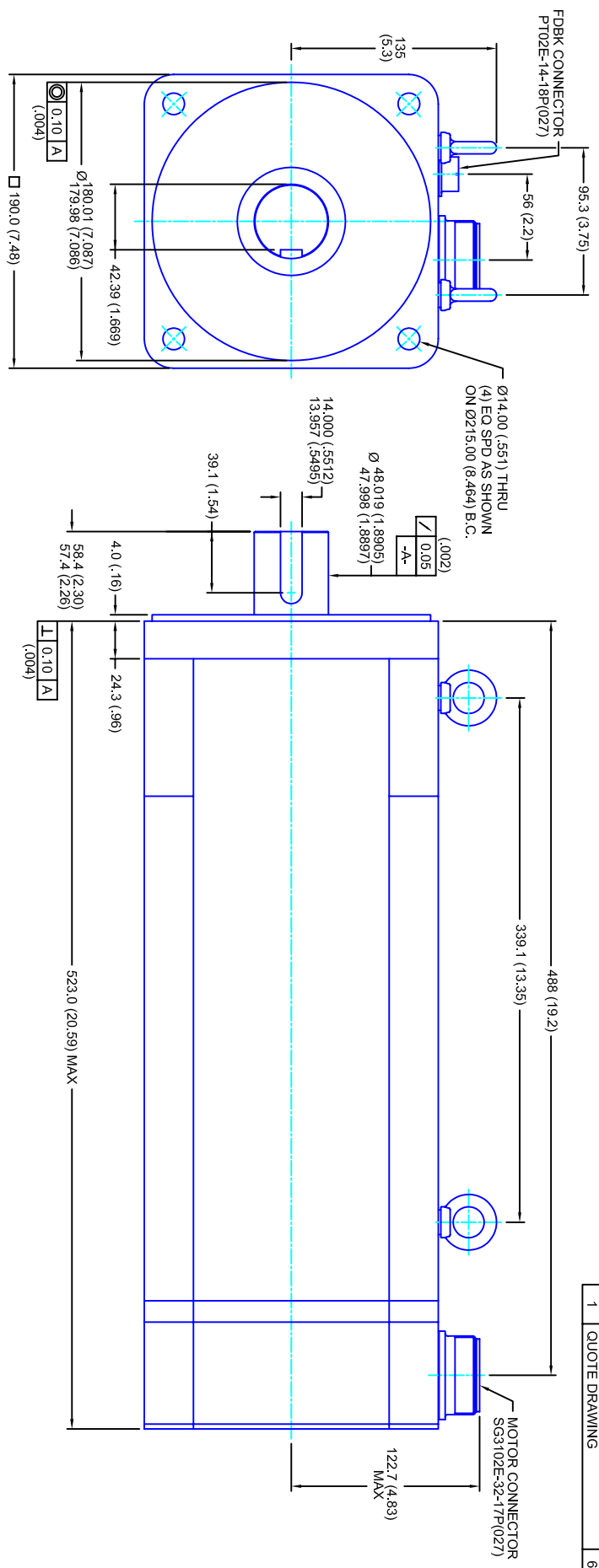


REVISIONS			
REV	DESCRIPTION	DATE	APP'D
1	QUOTE DRAWING	6/27/04	



- NOTES:**
1. MILLIMETERS (INCHES)
 2. AXIAL LOAD: 45 KG [100 LBS] MAX
 3. RADIAL LOAD: 113 KG [250 LBS] MAX @ 25.4MM [1.00] FROM FACE
 4. MOTOR SEALED TO IP65
 5. MOTOR SHAFT: G&P STEEL, GRADE 1144
 6. MOTOR FINISH: BLACK MATT FINISH
 7. MOTOR WEIGHT 73 KG [162 LBS]

ELECTRICAL DATA

MOTOR PARAMETERS	UNITS/MEASURE	VALUES
VOLTAGE	VOLTS-AC	480
AMP TYPE	-	SINE
HORSEPOWER	HP	18.0
KILOWATTS	KW	13.4
MAX OPERATING SPEED	RPM	1500
SPEED @ RATED TORQUE	RPM	1200
*CONTINUOUS RATED TORQUE @ 1200 RPM	IN-LBS(IN)M	939(106.1)
*CONTINUOUS STALL TORQUE	IN-LBS(IN)M	1092(123.4)
*CONTINUOUS LINE CURRENT	AMPS(RMS/Φ)	21.2
PEAK TORQUE	IN-LBS(IN)M	3276(370.2)
PEAK CURRENT	AMPS(RMS/Φ)	63.6
MAX THEORETICAL ACCEL.	RAD/SEC ²	23,450
TORQUE SENSITIVITY	KI [N-LBS/AMP/RMS/Φ] (N/M/AMP/RMS/Φ)	51.5(5.82)
BACK EMF (LINE TO LINE)	Vrms/Krpm	324
D.C. RESISTANCE (P-P)	OHMS	.53
INDUCTANCE (P-P)	MILLIHENRIES	7.8
ROTOR INERTIA	IN-LBS-SEC ² [KG-M ²]	.1397(.01579)
STATIC FRICTION	TT	13.0(1.5)

*25°C AMBIENT WITH A MAXIMUM CASE TEMPERATURE OF 100°C ON THE MOTOR. THERMOSTAT IN STATOR WILL OPEN IF STATOR TEMPERATURE EXCEEDS 155°C. THIS WILL GIVE YOU ~10% HEADROOM IN THE CONTINUOUS TORQUE RATING BEFORE THERMOSTAT OPENS. MOTOR MOUNTED ON A 356 X 356 X 19MM ALUMINUM HEATSINK.

ENCODER INFO:

SV - 4096L COMMUTATING

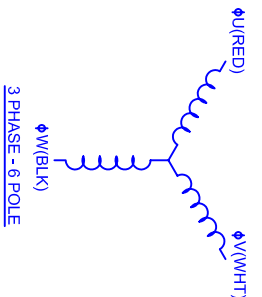
CONNECTION CHART

PT02E-14-18P(027)

ENCTHERM WIRE LEADS	WIRE FUNCTION	WIRE COLOR
PIN A	THERM	WHT
B	CH A	BLU
C	CH AI	BLU/BLK
D	GND CABLE	SHLD BRN
E	CH U	GRY
F	CH V	WHT
G	CH W	WHT
H	CH WI	WHT/BLK
J	+VDC	RED
K	THERM	WHT
L	CH Z	YEL
M	CH B	GRN
N	CH BI	GRN/BLK
P	CH BL	BRN/BLK
R	CH UI	GRY/BLK
S	CH VI	GRY/BLK
T	GND	BLK
U	CH ZI	YEL/BLK

SG3102E-32-17P(027)

MOTOR WIRE LEADS	WIRE FUNCTION	WIRE COLOR
PIN A	Φ U	RED
B	Φ V	WHT
C	Φ W	BLK
D	PE GND	GRN/YEL



CUSTOM MOTORS INC

190MM - 4 STK
460V/KE=324/MET/4096/CONN

TOLERANCES UNLESS SPECIFIED	
BORER:	= H2
DRILL:	= H7
DECIMAL .xxx	±.12 (.005)
DECIMAL .xx	±.25 (.010)
DECIMAL .x	±.51 (.020)
DECIMAL .	±.40 (.016)
ANGLE	±.030
REMOVE ALL BURRS/BREAK SHARP EDGES AS SHOWN (0.10°)	
FINISH:	
WATERLAL:	
SCALE	1/2:1
DATE	5/14/04
DRAWING NO.	CM1904R324MK4096CS
CUSTOMER:	
DRAWN:	DFLA
SHEET:	1 OF 1
REV.	1