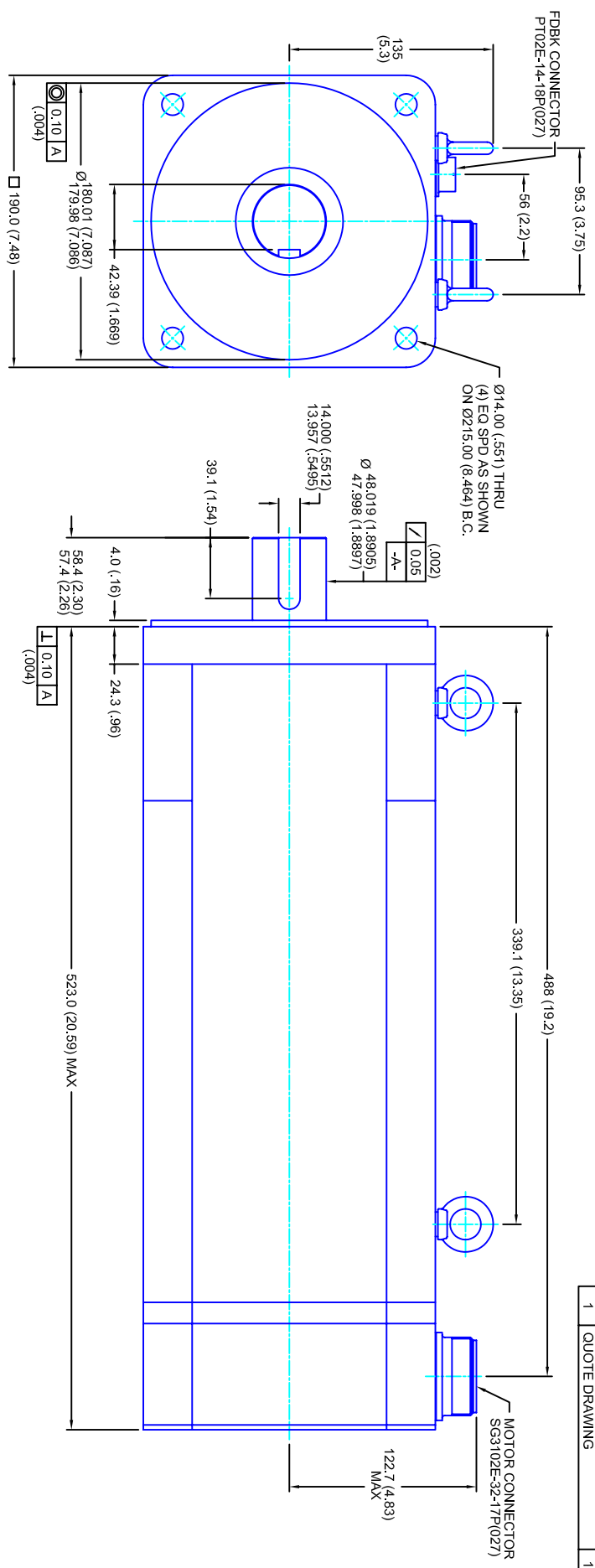


REVISIONS			
REV	DESCRIPTION	DATE	APP'D
1	QUOTE DRAWING	12/4/04	



- NOTES:**
1. MILLIMETERS (INCHES)
 2. AXIAL LOAD: 45 KG [100 LBS] MAX
 3. RADIAL LOAD: 113 KG [250 LBS] MAX @ 25.4MM [1.00] FROM FACE
 4. MOTOR SEALED TO IP65
 5. MOTOR SHAFT: G&P STEEL, GRADE 1144
 6. MOTOR FINISH: BLACK MATT FINISH
 7. MOTOR WEIGHT 73 KG [162 LBS]

ELECTRICAL DATA

MOTOR PARAMETERS	UNITS/MEASURE	VALUES
VOLTAGE	VOLTS-AC	230
AMP TYPE	-	SINE
HORSEPOWER	HP	35.7
KILOWATTS	KW	26.7
MAX OPERATING SPEED	RPM	3000
SPEED @ RATED TORQUE	RPM	2400
*CONTINUOUS RATED TORQUE @ 2400 RPM	IN-LBS(INM)	939(106.1)
*CONTINUOUS STALL TORQUE	IN-LBS(INM)	1092(123.4)
*CONTINUOUS LINE CURRENT	AMPS(RMS/Φ)	63.5
PEAK TORQUE	IN-LBS(INM)	1780(201.1)
PEAK CURRENT	AMPS(RMS/Φ)	103.5
MAX THEORETICAL ACCEL.	RAD/SEC ²	12,742
TORQUE SENSITIVITY	KI [N-BS/AMP/RMS/Φ] (IN-AMP/RMS/Φ)	17.2(1.94)
BACK EMF (LINE TO LINE)	Vrms/Krpm	108
D.C. RESISTANCE (P-P)	OHMS	.06
INDUCTANCE (P-P)	MILLIHENRIES	.84
ROTOR INERTIA	IN-LBS-SEC ² [KG-M ²]	.1397(.01579)
STATIC FRICTION	TT	13.0(1.5)

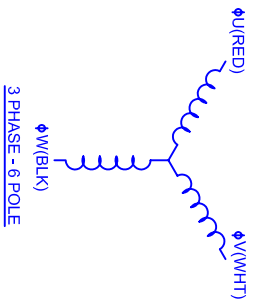
CONNECTION CHART

PT02E-14-18P(027)

ENCTHERM WIRE LEADS	WIRE FUNCTION	WIRE COLOR
A	THERM	WHT
B	CH A	BLU
C	CH A	BLU/BLK
D	GND CABLE	SHLD
E	CH U	BRN
F	CH V	GRY
G	CH W	WHT
H	CH W	WHT/BLK
J	-	-
K	+5VDC	RED
L	THERM	WHT
M	CH Z	YEL
N	CH B	GRN
P	CH BL	GRN/BLK
R	CH UL	BRN/BLK
S	CH VI	GRY/BLK
T	GND	BLK
U	CH Z1	YEL/BLK

SG3102E-32-17P(027)

MOTOR WIRE LEADS	PIN	WIRE FUNCTION	WIRE COLOR
A	Φ U	RED	
B	Φ V	WHT	
C	Φ W	BLK	
D	PE GND	GRN/YEL	



190MM - 4 STK
230V/KE=108/MET/2048/CONN

TOLERANCES UNLESS SPECIFIED			
BORER:	= H12		
DEGREE:	= 12 (005)		
DECIMAL .xxx	= .25 (010)		
DECIMAL .xx	= .51 (020)		
DECIMAL .x	= 1.01 (040)		
ANGLE	= 0.50		
REMOVE ALL BURRS/BREAK SHARP EDGES, AS PER (010)			
PROPRIETARY RIGHTS OF CUSTOM MOTORS ARE INCLUDED IN THE INFORMATION DISCLOSED HEREIN. THIS INFORMATION IS PROVIDED AS A SERVICE TO OUR CUSTOMERS. CUSTOMER SPECIFICATIONS TAKE PRECEDENCE OVER THIS DRAWING.			
CUSTOMER:	DRAWN: DFLA SHEET: 1 OF 1		
SCALE	DATE	DRAWING NO.	REV.
1/2:1	6/27/04	CM1904Q108MK2048CS	1