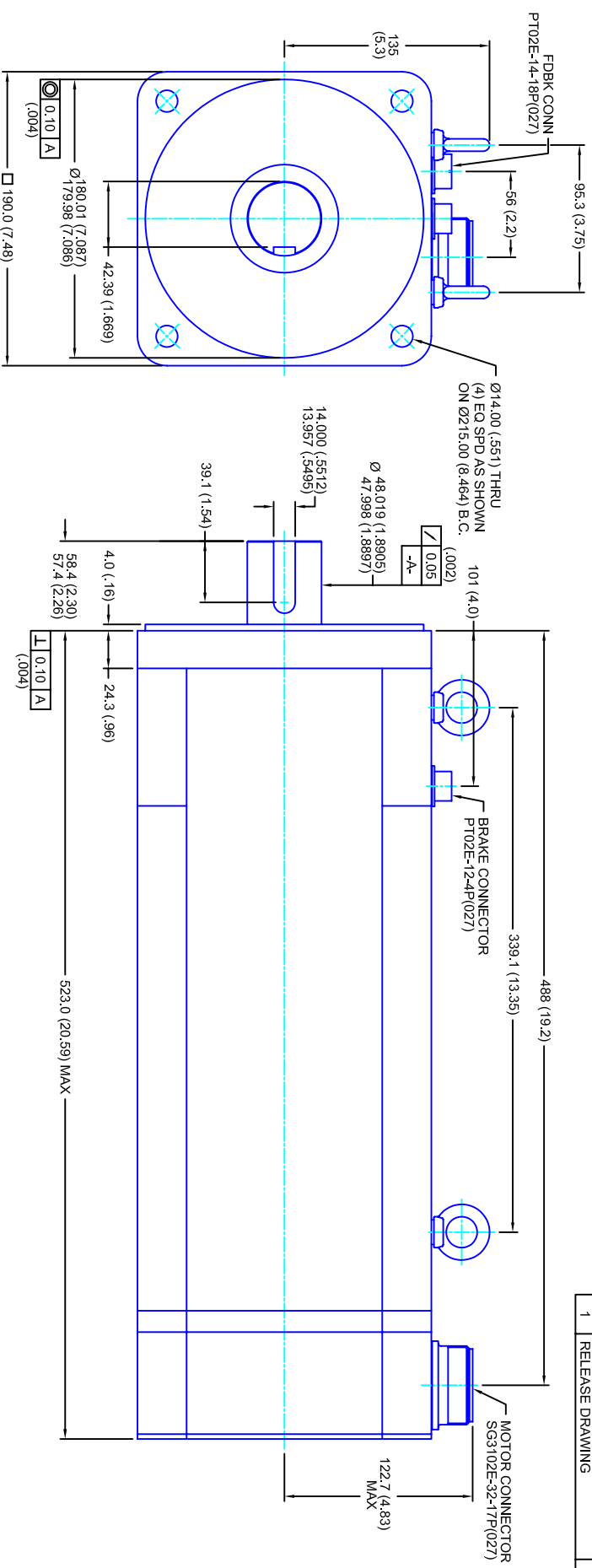


REVISIONS			
REV	DESCRIPTION	DATE	APPD
1	RELEASE DRAWING	11/3/05	



- NOTES:**
1. MILLIMETERS (INCHES)
 2. AXIAL LOAD: 45 KG [100 LBS] MAX
 3. RADIAL LOAD: 113 KG [250 LBS] MAX @ 25.4MM [1.00] FROM FACE
 4. MOTOR SEALED TO IP65
 5. MOTOR SHAFT: G&P STEEL, GRADE 1144
 6. MOTOR FINISH: BLACK MATT FINISH
 7. MOTOR WEIGHT: 69 KG [153 LBS]

ELECTRICAL DATA

MOTOR PARAMETERS	UNITS/MEASURE	VALUES
VOLTAGE	VOLTS-AC	460
AMP TYPE	-	SINE
HORSEPOWER	Hp	28.8
KILOWATTS	KW	21.5
MAX OPERATING SPEED	RPM	2850
SPEED @ RATED TORQUE	RPM	2400
*CONTINUOUS RATED TORQUE @ 2400 RPM	IN-LBS(INM)	757/65.51
*CONTINUOUS STALL TORQUE	IN-LBS(INM)	880/99.41
*CONTINUOUS LINE CURRENT	AMPS(RMS/Φ)	34.2
PEAK TORQUE	IN-LBS(INM)	2640/298.31
PEAK CURRENT	AMPS(RMS/Φ)	102.7
MAX THEORETICAL ACCEL.	RAD/SEC ²	24,066
TORQUE SENSITIVITY	KI [N-SS/AMP/RMS/Φ]/(M/AMP/ENIS/Φ)	25.7/2.911
BACK EMF (LINE TO LINE)	Vrms/Krpm	162
D.C. RESISTANCE (P-P)	OHMS	.19
INDUCTANCE (P-P)	MILLIHENRIES	2.6
ROTOR INERTIA	IN-LBS-SEC ² [KG-M ²]	.1097/0.1240] w/ Bk
STATIC FRICTION	TT	11.41[1.3]

CONNECTION CHART

PT02E-14-18P(027)

REST/TERM	WIRE FUNCTION	WIRE COLOR
PIN A	-	-
PIN B	-	-
PIN C	-	-
PIN D	RES SHLD	WHT/BLK
PIN E	REF	RED/WHT
PIN F	SIN GND	YEL
PIN G	COS GND	BLK
PIN H	SIN	BLU
PIN J	-	-
PIN K	-	-
PIN L	-	-
PIN M	-	-
PIN N	THERM	WHT
PIN P	-	-
PIN R	REF GND	YEL/WHT
PIN S	COS	RED
PIN T	-	-
PIN U	THERM	WHT

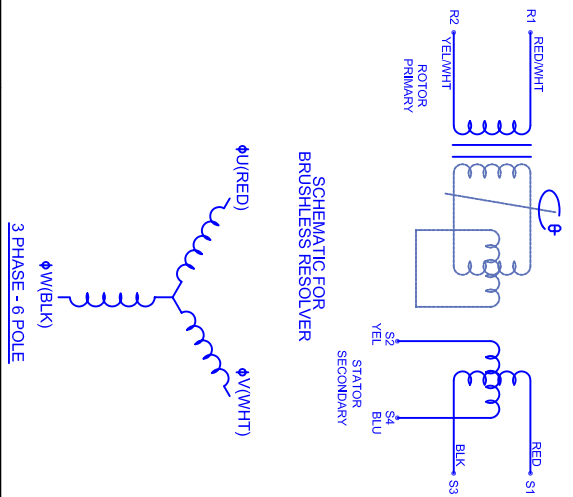
SG3102E-32-17P(027)

MOTOR WIRE LEADS	WIRE FUNCTION	WIRE COLOR
PIN A	ΦU	RED
PIN B	ΦV	WHT
PIN C	ΦW	BLK
PIN D	PE GND	GRN/YEL

BRAKE WIRE LEADS	WIRE FUNCTION	WIRE COLOR
PIN A	BRK (+)	RED
PIN B	BRK (-)	BLK
PIN C	-	-
PIN D	-	-

BRAKE INFO:
 INPUT VOLTAGE: 24 VDC
 HOLDING FORCE: 122 Nm [90 FT-LBS] MAX
 CURRENT DRAW: 2.51 AMPS
 RELEASING TIME: 100 ms
 INERTIA: .00150 IN-LBS-SEC

SCHEMATIC FOR BRUSHLESS RESOLVER



CUSTOM MOTORS INC
 190MM - 3 STK
 460V/KE=162/METRES/CONN/BRK

MATERIAL:	SCALE	DATE	DRAWING NO.	CUSTOMER:	DRAWN:	DLA	SHEET:	REV.
	1/2:1	3/8/05	CW1903R162MKRCSB				1 OF 1	1

TOLERANCES UNLESS SPECIFIED
 SURFACE FINISH: = H12
 BORE: = H12
 DECIMAL .xxx ±.12 (.005)
 DECIMAL .xx ±.25 (.010)
 DECIMAL .x ±.51 (.020)
 DECIMAL . ±.40 (.016)
 ANGLE (MM/INCHES) ±.030

REMOVE ALL BURRS/BREAK SHARP EDGES AS SHOWN (0.10°)
 PROPER FAIR RIGHTS OF CUSTOM MOTORS ARE INCLUDED IN THE INFORMATION PROVIDED HEREIN. THIS INFORMATION DOES NOT BE APPLICABLE TO OTHER CUSTOMER SPECIFICATIONS. CUSTOMER SPECIFICATIONS TAKE PRECEDENCE OVER THIS INFORMATION.
 CUSTOMER: DFLA SHEET: 1 OF 1