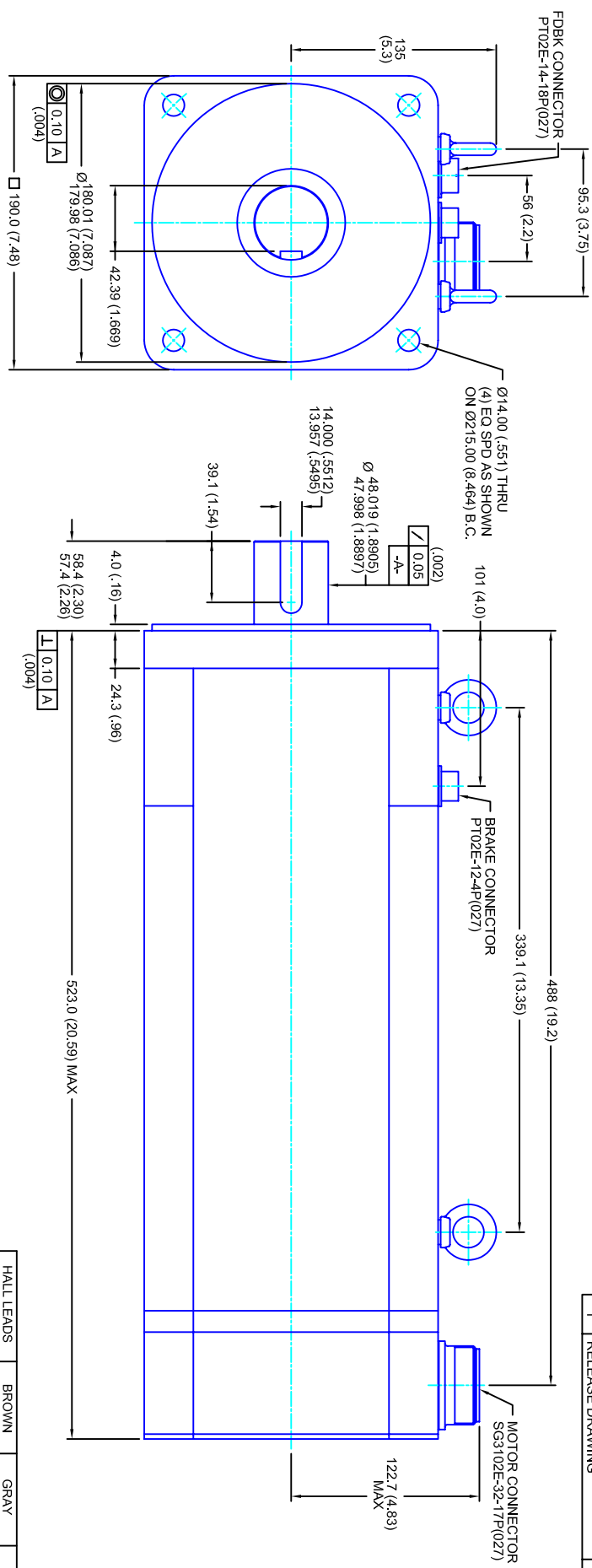


REVISIONS			
REV	DESCRIPTION	DATE	APPD
1	RELEASE DRAWING	11/3/05	



- NOTES:**
1. MILLIMETERS (INCHES)
 2. AXIAL LOAD: 45 KG (100 LBS) MAX
 3. RADIAL LOAD: 113 KG (250 LBS) MAX @ 25.4MM (1.00) FROM FACE
 4. MOTOR SEALED TO IP65
 5. MOTOR SHAFT: G&P STEEL, GRADE 1144
 6. MOTOR FINISH: BLACK MATT FINISH
 7. MOTOR WEIGHT: 69 KG (153 LBS)

ELECTRICAL DATA

MOTOR PARAMETERS	UNITS/MEASURE	VALUES
VOLTAGE	VOLTS-AC	460
AMP TYPE	-	SINE
HORSEPOWER	HP	28.8
KILOWATTS	KW	21.5
MAX OPERATING SPEED	RPM	2850
SPEED @ RATED TORQUE	RPM	2400
*CONTINUOUS RATED TORQUE @ 2400 RPM	IN-LBS(IN)	75/765.51
*CONTINUOUS STALL TORQUE	IN-LBS(IN)	880/99.41
*CONTINUOUS LINE CURRENT	AMPS(RMS/Φ)	34.2
PEAK TORQUE	IN-LBS(IN)	2640/298.31
PEAK CURRENT	AMPS(RMS/Φ)	102.7
MAX THEORETICAL ACCEL.	RAD/SEC ²	24,066
TORQUE SENSITIVITY	KI [N-LBS/AMP/RMS/Φ] [IN-AMP/RMS/Φ]	25.7/2.911
BACK EMF (LINE TO LINE)	V/MS/KRPM	162
D.C. RESISTANCE (P-P)	OHMS	.19
INDUCTANCE (P-P)	MILLIHENRIES	2.6
ROTOR INERTIA	IN-LBS-SEC ² [KG-M ²]	.1097/0.1240 w/ Bk
STATIC FRICTION	TT	11.4/1.31

CONNECTION CHART

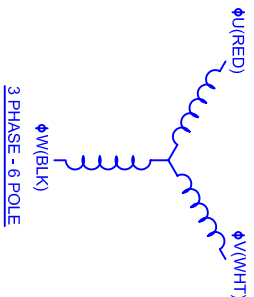
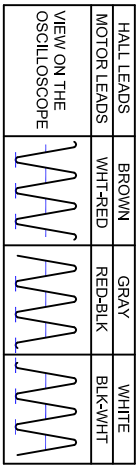
PT02E-14-18P(027)				SG3102E-32-17P(027)			
ENGTHERM WIRE LEADS	WIRE FUNCTION	WIRE COLOR	PIN	MOTOR WIRE LEADS	WIRE FUNCTION	WIRE COLOR	PIN
A	THERM	WHT	A	A	Φ U	RED	A
B	CH A	BLU	B	B	Φ V	WHT	B
C	CH A	BLU/BLK	C	C	Φ W	BLK	C
D	GND CABLE	SHLD	D	D	PE GND	GRN/YEL	D
E	CH U	BRN					
F	CH V	GRY					
G	CH W	WHT					
H	CH W	WHT/BLK					
J	-	-					
K	+5VDC	RED	A				
L	THERM	WHT	B				
M	CH Z	YEL	C				
N	CH B	GRN	D				
P	CH BL	GRN/BLK					
R	CH UL	BRN/BLK					
S	CH VL	GRY/BLK					
T	GND	BLK					
U	CH Z1	YEL/BLK					

ENCODER INFO:

BRAKE INFO:

5V - 2048L COMMUTATING

INPUT VOLTAGE: 24 VDC
 HOLDING FORCE: 122 Nm [90 FT-LBS] MAX
 CURRENT DRAW: 2.51 AMPS
 RELEASING TIME: 100 ms
 INERTIA: .00150 IN-LBS-SEC²



CUSTOM MOTORS INC

190MM - 3 STK

460V/KE=162/MET/2048/CONN/BRK

TOLERANCES UNLESS SPECIFIED	
BORE:	= H7
SHAFT:	= H7
DECIMAL .xxx	= .12 (.005)
DECIMAL .xx	= .25 (.010)
DECIMAL .x	= .51 (.020)
ANGLE	= .40 (.016)
ANGLE	= .90
REMOVE ALL BURRS/BREAK SHARP EDGES AS SHOWN (0.10°)	
FINISH:	STANDARD FINISH
SCALE:	1/2:1
DATE:	3/8/05
DRAWING NO.:	CM1903R162MK2048CSB
CUSTOMER:	DRAWN: DFLA SHEET: 1 OF 1
REV.:	1