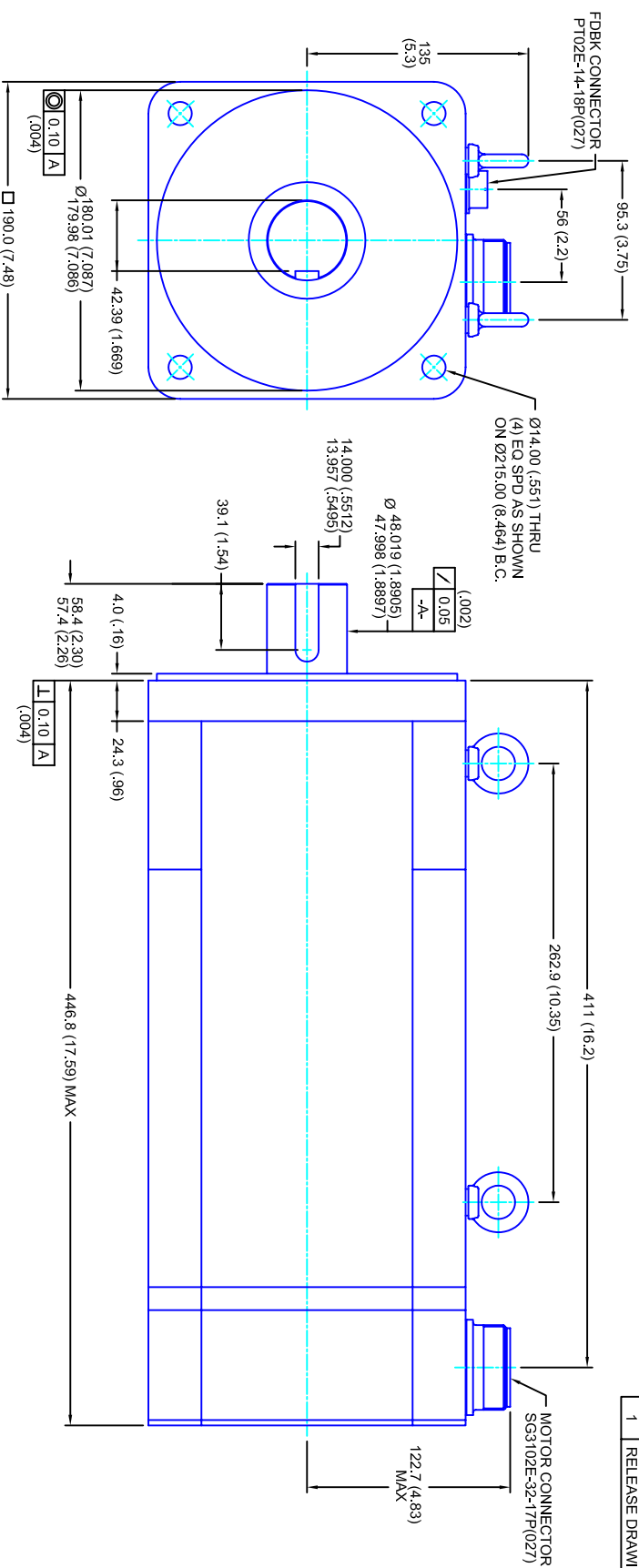


REVISIONS			
REV	DESCRIPTION	DATE	APPD
1	RELEASE DRAWING	10/27/05	



- NOTES:**
1. MILLIMETERS (INCHES)
  2. AXIAL LOAD: 45 KG [100 LBS.] MAX
  3. RADIAL LOAD: 113 KG [250 LBS.] MAX @ 25.4MM [1.00] FROM FACE
  4. MOTOR SEALED TO IP65
  5. MOTOR SHAFT: G&P STEEL, GRADE 1144
  6. MOTOR FINISH: BLACK MATT FINISH
  7. MOTOR WEIGHT: 59 KG [130 LBS.]

**ELECTRICAL DATA**

MOTOR PARAMETERS	UNITS/MEASURE	VALUES
VOLTAGE	VOLTS-AC	460
AMP TYPE	-	SINE
HORSEPOWER	HP	28.8
KILOWATTS	KW	21.5
MAX OPERATING SPEED	RPM	2850
SPEED @ RATED TORQUE	RPM	2400
*CONTINUOUS RATED TORQUE @ 2400 RPM	IN-LBS(IN)M	75/765.51
*CONTINUOUS STALL TORQUE	IN-LBS(IN)M	880/99.41
*CONTINUOUS LINE CURRENT	AMP(S/RMS/Φ)	34.2
PEAK TORQUE	IN-LBS(IN)M	2640/298.31
PEAK CURRENT	AMP(S/RMS/Φ)	102.7
MAX THEORETICAL ACCEL.	RAD/SEC <sup>2</sup>	24,399
TORQUE SENSITIVITY	KI [N-LS/AMP/RMS/Φ] / (IN-AMP/RMS/Φ)	25.7/2.911
BACK EMF (LINE TO LINE)	±10% Vrms/Krpm	162
D.C. RESISTANCE (P-P)	±10% OHMS	.19
INDUCTANCE (P-P)	±10% MILLIHENRIES	2.6
ROTOR INERTIA	IN-LBS-SEC <sup>2</sup> [KG-M <sup>2</sup> ]	.1082(.01222)
STATIC FRICTION	TT	11.41(.3)

**CONNECTION CHART**

PT02E-14-18P(027)

ENGTHERM WIRE LEADS	WIRE FUNCTION	WIRE COLOR
A	THERM	WHT
B	CH A	BLU
C	CH A1	BLU/BLK
D	GND CABLE	SHLD
E	CH U	BRN
F	CH V	GRY
G	CH W	WHT
H	CH W1	WHT/BLK
J	-	-
K	+5VDC	RED
L	THERM	WHT
M	CH Z	YEL
N	CH B	GRN
P	CH B1	GRN/BLK
R	CH U1	BRN/BLK
S	CH V1	GRY/BLK
T	GND	BLK
U	CH Z1	YEL/BLK

SG3102E-32-17P(027)

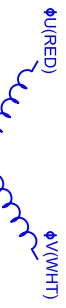
MOTOR WIRE LEADS	WIRE FUNCTION	WIRE COLOR
A	Φ U	RED
B	Φ V	WHT
C	Φ W	BLK
D	PE GND	GRN/YEL

**ENCODER INFO:**

5V - 1024L COMMUTATING

HALL LEADS	BROWN	GRAY	WHITE
MOTOR LEADS	WHT-RED	RED-BLK	BLK-WHT

VIEW ON THE OSCILLOSCOPE



190MM - 3 STK  
460V/KE=162MET/1024/CONN

SCALE	DATE	DRAWING NO.	CUSTOMER:	DRAWN:	DFLA	SHEET:	REV.
1/2:1	10/27/05	CM1903R162MK1024CS				1 OF 1	1

**TOLERANCES UNLESS SPECIFIED**  
 SURFACE FINISH: = H12 ✓  
 BORE: = H12 ✓  
 DECIMAL .xxx ±.12 (.005)  
 DECIMAL .xx ±.25 (.010)  
 DECIMAL .x ±.51 (.020)  
 FRACTION ±.001 (.001)  
 ANGLE ±.090

REMOVE ALL BURRS/BREAK SHARP EDGES AS SHOWN (0.10°)

PROPRIETARY RIGHTS OF CUSTOM MOTORS ARE INCLUDED IN THE INFORMATION DISCLOSED HEREIN. THIS INFORMATION IS NOT TO BE REPRODUCED OR TRANSMITTED IN ANY FORM OR BY ANY MEANS, ELECTRONIC OR MECHANICAL, INCLUDING PHOTOCOPYING, RECORDING, OR BY ANY INFORMATION STORAGE AND RETRIEVAL SYSTEM.