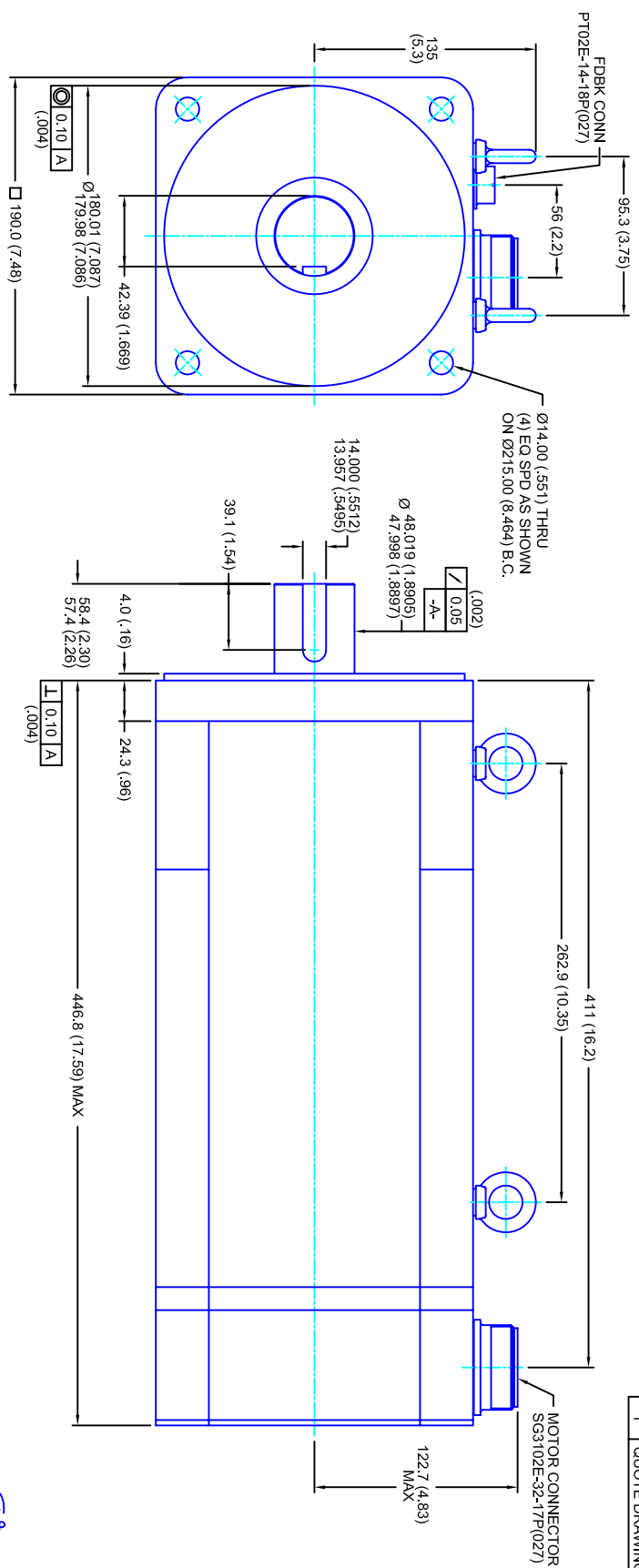


REVISIONS			
REV	DESCRIPTION	DATE	APPD
1	QUOTE DRAWING	6/27/04	



- NOTES:**
1. MILLIMETERS (INCHES)
 2. AXIAL LOAD: 45 KG [100 LBS] MAX
 3. RADIAL LOAD: 113 KG [250 LBS] MAX @ 25.4MM [1.00] FROM FACE
 4. MOTOR SEALED TO IP65
 5. MOTOR SHAFT: G&P STEEL, GRADE 1144
 6. MOTOR FINISH: BLACK MATT FINISH
 7. MOTOR WEIGHT: 59 KG [130 LBS]

ELECTRICAL DATA

MOTOR PARAMETERS	UNITS/MEASURE	VALUES
VOLTAGE	VOLTS-AC	230
AMP TYPE	-	SINE
HORSEPOWER	HP	28.8
KILOWATTS	KW	21.5
MAX OPERATING SPEED	RPM	3000
SPEED @ RATED TORQUE	RPM	2400
*CONTINUOUS RATED TORQUE @ 2400 RPM	IN-LBS(INM)	75/75.51
*CONTINUOUS STALL TORQUE	IN-LBS(INM)	880/99.41
*CONTINUOUS LINE CURRENT	AMPS(RMS/Φ)	69.3
PEAK TORQUE	IN-LBS(INM)	1780/201.11
PEAK CURRENT	AMPS(RMS/Φ)	140.2
MAX THEORETICAL ACCEL.	RAD/SEC ²	16,451
TORQUE SENSITIVITY	KI [N-BS/AMP/RMS/Φ] [IN-AMP/RMS/Φ]	12.7/1.44
BACK EMF (LINE TO LINE)	Vrms/Krpm	80
D.C. RESISTANCE (P-P)	OHMS	.05
INDUCTANCE (P-P)	MILLIHENRIES	.65
ROTOR INERTIA	IN-LBS-SEC ² [KG-M ²]	.1082/0.12221
STATIC FRICTION	TT	11.4/1.31

CONNECTION CHART

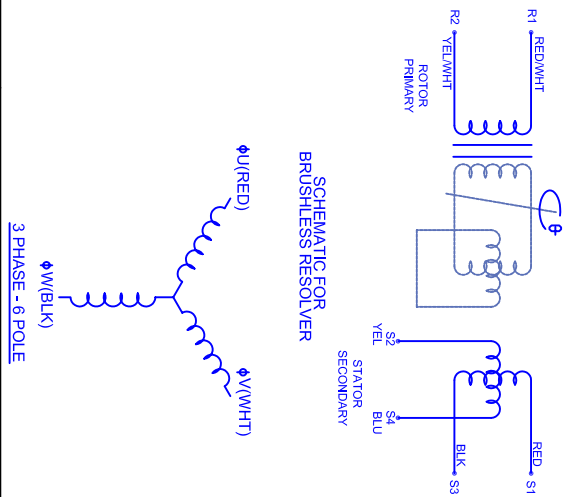
PT02E-14-18P(027)

REST/TERM	WIRE LEADS	WIRE COLOR
RES/TERM	WIRE FUNCTION	WIRE COLOR
A	-	-
B	-	-
C	-	-
D	RES SHLD	WHT/BLK
E	REF	RED/WHT
F	SIN GND	YEL
G	COS GND	BLK
H	SIN	BLU
J	-	-
K	-	-
L	-	-
M	-	-
N	TERM	WHT
P	-	-
R	REF GND	YEL/WHT
S	COS	RED
T	-	-
U	TERM	WHT

SG3102E-32-17P(027)

MOTOR WIRE LEADS	WIRE FUNCTION	WIRE COLOR
A	ΦU	RED
B	ΦV	WHT
C	ΦW	BLK
D	PE GND	GRN/YEL

SCHEMATIC FOR BRUSHLESS RESOLVER



CUSTOM MOTORS INC

230V/KE=80/METRES/CONN

SCALE	DATE	DRAWING NO.	CUSTOMER:	DRAWN:	SHEET:	REV.
1/2:1	6/27/04	CM1903Q80MKRCS		DFLA	1 OF 1	1

*25°C AMBIENT WITH A MAXIMUM CASE TEMPERATURE OF 100°C ON THE MOTOR. THERMOSTAT IN STATOR WILL OPEN IF STATOR TEMPERATURE EXCEEDS 155°C. THIS WILL GIVE YOU ~10% HEADROOM IN THE CONTINUOUS TORQUE RATING BEFORE THERMOSTAT OPENS. MOTOR MOUNTED ON A 356 X 356 X 19MM ALUMINUM HEATSINK.