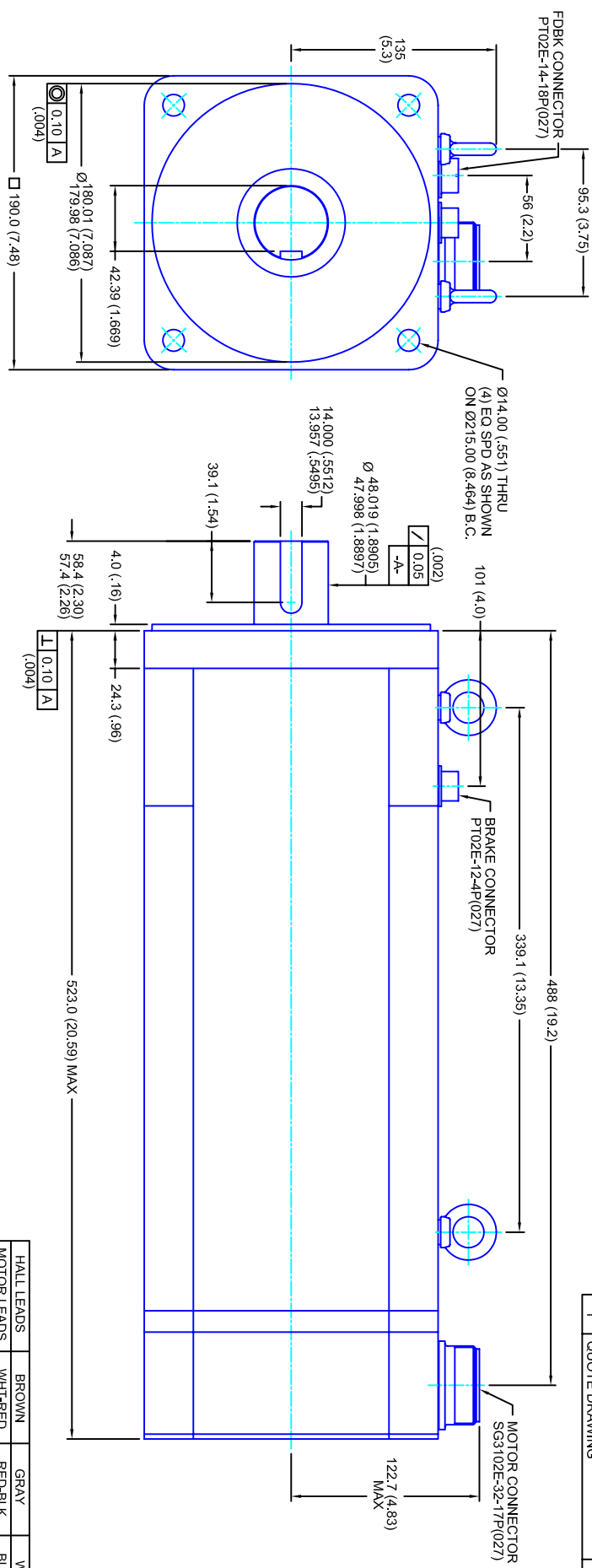


REVISIONS			
REV	DESCRIPTION	DATE	APPD
1	QUOTE DRAWING	6/27/04	



- NOTES:**
1. MILLIMETERS (INCHES)
 2. AXIAL LOAD: 45 KG (100 LBS.) MAX
 3. RADIAL LOAD: 113 KG (250 LBS.) MAX @ 25.4MM (1.00) FROM FACE
 4. MOTOR SEALED TO IP65
 5. MOTOR SHAFT: G&P STEEL, GRADE 1144
 6. MOTOR FINISH: BLACK MATT FINISH
 7. MOTOR WEIGHT: 69 KG (153 LBS.)

ELECTRICAL DATA

MOTOR PARAMETERS	UNITS/MEASURE	VALUES
VOLTAGE	VOLTS-AC	230
AMP TYPE	-	SINE
HORSEPOWER	HP	28.8
KILOWATTS	KW	21.5
MAX OPERATING SPEED	RPM	3000
SPEED @ RATED TORQUE	RPM	2400
*CONTINUOUS RATED TORQUE @ 2400 RPM	IN-LBS(INM)	75/765.51
*CONTINUOUS LINE CURRENT	AMPS(RMS/Φ)	880/99.41
CONTINUOUS STALL TORQUE	IN-LBS(INM)	1780/201.11
CONTINUOUS LINE CURRENT	AMPS(RMS/Φ)	140.2
PEAK TORQUE	AMP/SEC ²	16,226
MAX THEORETICAL ACCEL.	KI	12.7(1.44)
TORQUE SENSITIVITY	IN-LBS/AMP(RMS/Φ) / IN-AMP(RMS/Φ)	80
BACK EMF (LINE TO LINE)	Vrms/Krpm	.05
D.C. RESISTANCE (P-P)	OHMS	.65
INDUCTANCE (P-P)	MILLIHENRIES	1.097(101240) w/ Bk
ROTOR INERTIA	IN-LBS-SEC ² [KG-M ²]	11.4(1.3)
STATIC FRICTION	TT	

CONNECTION CHART

PT02E-14-18P(027)				SG3102E-32-17P(027)			
ENGTHERM WIRE LEADS	WIRE FUNCTION	WIRE COLOR	PIN	MOTOR WIRE LEADS	WIRE FUNCTION	WIRE COLOR	PIN
A	THERM	WHT	A	A	Φ U	RED	A
B	CH A	BLU	B	B	Φ V	WHT	B
C	CH A	BLU/BLK	C	C	Φ W	BLK	C
D	GND CABLE	SHLD	D	D	PE GND	GRN/YEL	D
E	CH U	BRN					
F	CH V	GRY					
G	CH W	WHT					
H	CH W	WHT/BLK					
J	-	-					
K	+5VDC	RED					
L	THERM	WHT					
M	CH Z	YEL					
N	CH B	GRN					
P	CH B	GRN/BLK					
R	CH U	BRN/BLK					
S	CH V	GRY/BLK					
T	GND	BLK					
U	CH Z	YEL/BLK					

ENCODER INFO:

BRAKE INFO:

5V - 2048L COMMUTATING

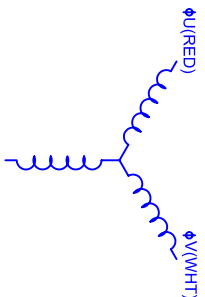
INPUT VOLTAGE: 24 VDC
 HOLDING FORCE: 122 Nm [90 FT-LBS] MAX
 CURRENT DRAW: 2.51 AMPS
 RELEASING TIME: 100 ms
 INERTIA: .00150 IN-LBS-SEC²

HALL LEADS	BROWN	GRAY	WHITE
MOTOR LEADS	WHT-RED	RED-BLK	BLK-WHT

VIEW ON THE OSCILLOSCOPE

MOTOR ROTATION IS COUNTER CLOCKWISE (CCW)
 LOOKING AT MOUNTING FACE END

HALL SENSOR WAVE STATOR OUTPUT WAVE



190MM - 3 STK

230V/KE=80/MET/2048/CONN/BRK

CUSTOM MOTORS INC

TOLERANCES UNLESS SPECIFIED

BORER: = H12 ✓
 DECIMAL .xxx ±.12 (.005)
 DECIMAL .xx ±.25 (.010)
 DECIMAL .x ±.51 (.020)
 FRACTION ±.001 (0.0005)
 ANGLE (MM INCHES) ±.030

REMOVE ALL BURRS/BREAK SHARP EDGES, ZAP PER (0.10")

PROPRIETARY RIGHTS OF CUSTOM MOTORS ARE INCLUDED IN THE INFORMATION PROVIDED HEREIN. THIS INFORMATION IS NOT TO BE REPRODUCED OR TRANSMITTED IN ANY FORM OR BY ANY MEANS, ELECTRONIC OR MECHANICAL, INCLUDING PHOTOCOPYING, RECORDING, OR BY ANY INFORMATION STORAGE AND RETRIEVAL SYSTEM.

CUSTOMER: DRAWN: DFLA SHEET: 1 OF 1

SCALE: 1/2:1 DATE: 6/27/04 DRAWING NO: CM1903Q80MK2048CSB REV: 1