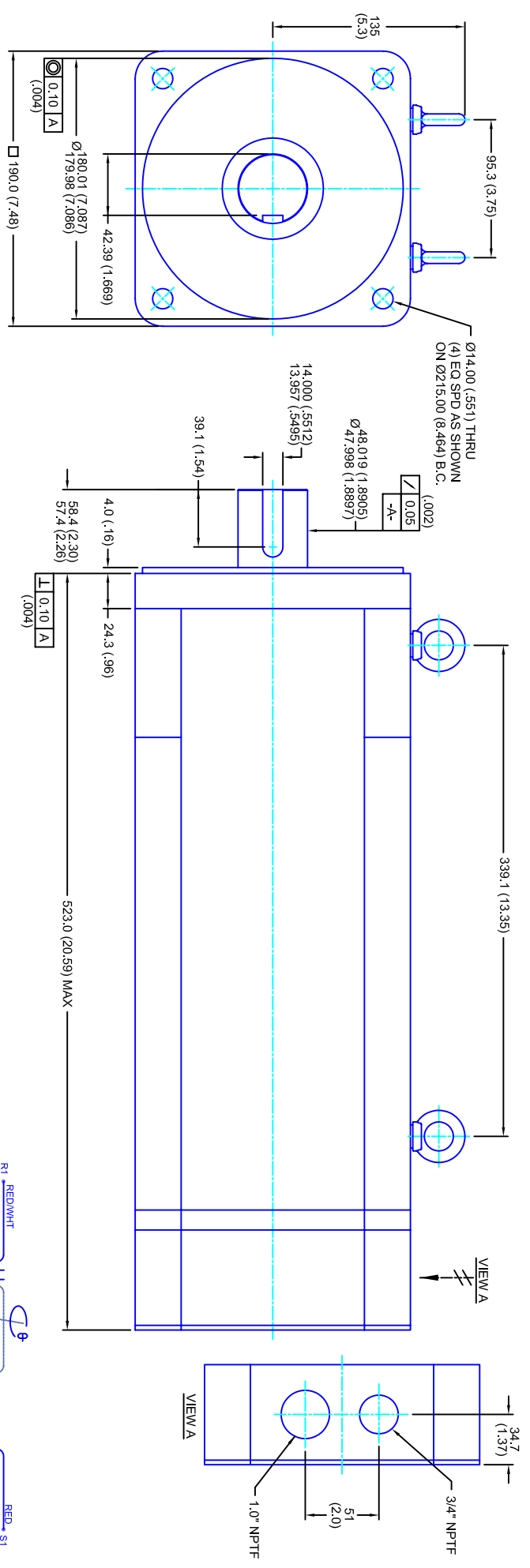


REVISIONS			
REV	DESCRIPTION	DATE	APPD
1	RELEASE DRAWING	11/3/05	



- NOTES:**
1. MILLIMETERS (INCHES)
 2. AXIAL LOAD: 45 KG [100 LBS] MAX
 3. RADIAL LOAD: 113 KG [250 LBS] MAX @ 25.4MM [1.00] FROM FACE
 4. MOTOR SEALED TO IP65
 5. MOTOR SHAFT: G&P STEEL, GRADE 1144
 6. MOTOR FINISH: BLACK MATT FINISH
 7. MOTOR WEIGHT 69 KG [153 LBS]

ELECTRICAL DATA

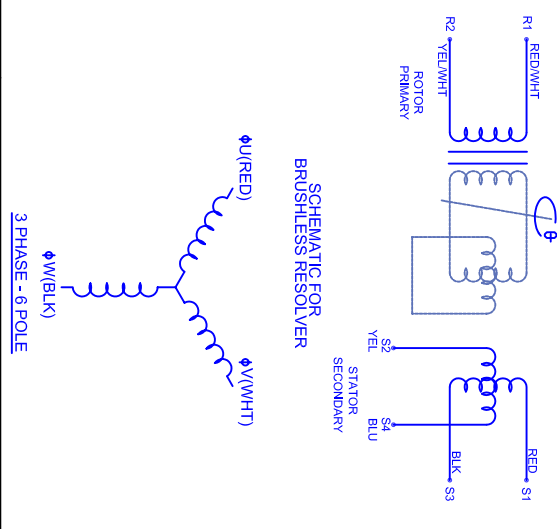
MOTOR PARAMETERS	UNITS/MEASURE	VALUES
VOLTAGE	VOLTS-AC	230
AMP TYPE	-	SINE
HORSEPOWER	HP	14.4
KILOWATTS	KW	10.7
MAX OPERATING SPEED	RPM	1400
SPEED @ RATED TORQUE	RPM	1200
*CONTINUOUS RATED TORQUE @ 1200 RPM	IN-LBS(INM)	757(56.5)
*CONTINUOUS STALL TORQUE	IN-LBS(INM)	880(99.4)
*CONTINUOUS LINE CURRENT	IN-LBS(INM)	34.2
PEAK TORQUE	IN-LBS(INM)	2640(298.3)
PEAK CURRENT	AMPS(RMS/Φ)	102.7
MAX THEORETICAL ACCEL.	RAD/SEC ²	24,066
TORQUE SENSITIVITY	KI [N-SS/AMP/RMS/Φ]/(MM/AMP/RMS/Φ)	25.7(2.91)
BACK EMF (LINE TO LINE)	Vrms/Krpm	162
D.C. RESISTANCE (P-P)	OHMS	.19
INDUCTANCE (P-P)	MILLIHENRIES	2.6
ROTOR INERTIA	Jm	.1097(1.01240) w/ BRK
STATIC FRICTION	TT	11.4(1.3)

CONNECTION CHART

RES/THERM/BRK WIRE LEADS	WIRE FUNCTION	WIRE COLOR	TERMINAL FUNCTION	WIRE COLOR
R1	SHLD	WHT/BLK	1	Φ U
R2	THERM	WHT	2	Φ V
R3	THERM	WHT	3	Φ W
R4	SIN GND	YEL	-	PE GND
R5	COS GND	BLK		
R6	COS	RED		
R7	SIN	BLU		
R8	REF	RED/WHT		
R9	REF GND	YEL/WHT		
R10	BRK (-)	BLK		
R11	BRK (+)	RED		

BRAKE INFO:
 INPUT VOLTAGE: 24 VDC
 HOLDING FORCE: 122 Nm [90 FT-LBS] MAX
 CURRENT DRAV: 2.51 AMPS
 RELEASING TIME: 100 ms
 INERTIA: .00150 IN-LBS-SEC

SCHEMATIC FOR BRUSHLESS RESOLVER



*25°C AMBIENT WITH A MAXIMUM CASE TEMPERATURE OF 100°C ON THE MOTOR. THERMOSTAT IN STATOR WILL OPEN IF STATOR TEMPERATURE EXCEEDS 155°C. THIS WILL GIVE YOU ~10% HEADROOM IN THE CONTINUOUS TORQUE RATING BEFORE THERMOSTAT OPENS. MOTOR MOUNTED ON A 356 X 356 X 19MM ALUMINUM HEATSINK.

TOLERANCES UNLESS SPECIFIED

BORER: = H12 ✓
 DECIMAL .xxx ±.12 (0.05)
 DECIMAL .xx ±.25 (0.10)
 DECIMAL .x ±.51 (0.20)
 FRACTION 1/32 ±.01 (0.6)
 ANGLE (MM/INCHES) ±.030

REMOVE ALL BURRS/BREAK SHARP EDGES AS SHOWN (0.10°)

PROPRIETARY RIGHTS OF CUSTOM MOTORS ARE INCLUDED IN THE INFORMATION PROVIDED HEREIN. THIS INFORMATION IS PROVIDED AS A SERVICE TO OUR CUSTOMERS AND IS NOT TO BE REPRODUCED OR TRANSMITTED IN ANY FORM OR BY ANY MEANS, ELECTRONIC OR MECHANICAL, INCLUDING PHOTOCOPYING, RECORDING, OR BY ANY INFORMATION STORAGE AND RETRIEVAL SYSTEM.

CUSTOM MOTORS INC

190MM - 3 STK
 230V/KE=162MET/RES/NPT

CUSTOMER: - DRAWING NO. CM19030Q162MKRNP1B

SCALE 1/2:1 DATE 3/8/05 DRAWING NO. CM19030Q162MKRNP1B

FINISH: MATERIAL: 1/2:1

1