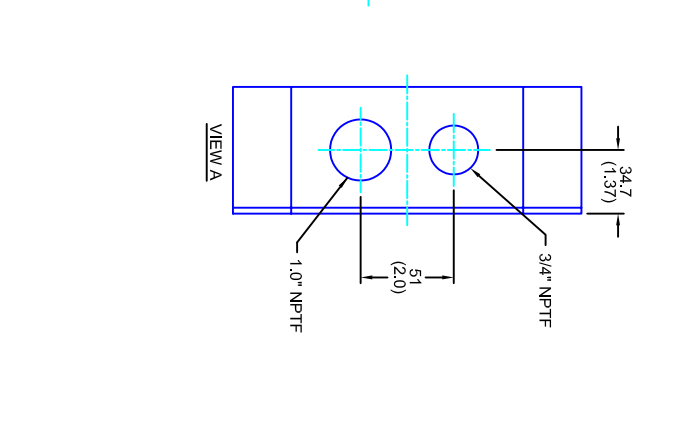
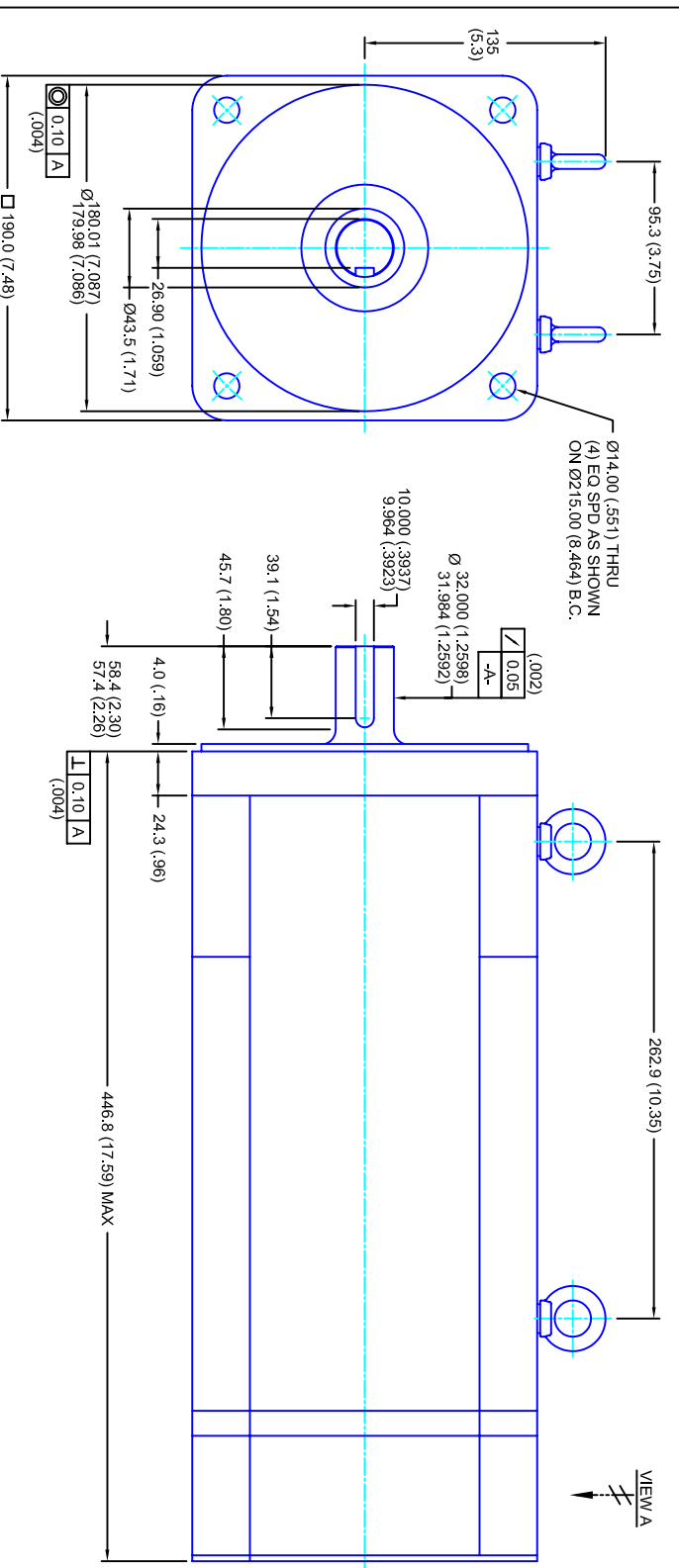


REVISIONS			
REV	DESCRIPTION	DATE	APPD
1	RELEASE DRAWING	11/3/05	



- NOTES:**
1. MILLIMETERS (INCHES)
 2. AXIAL LOAD: 45 KG [100 LBS] MAX
 3. RADIAL LOAD: 113 KG [250 LBS] MAX @ 25.4MM [1.00] FROM FACE
 4. MOTOR SEALED TO IP65
 5. MOTOR SHAFT: G&P STEEL, GRADE 1144
 6. MOTOR FINISH: BLACK MATT FINISH
 7. MOTOR WEIGHT: 55 KG [121 LBS]

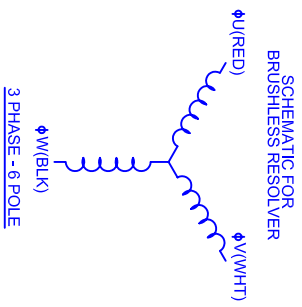
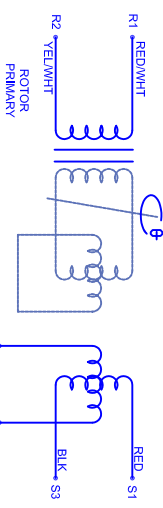
ELECTRICAL DATA

MOTOR PARAMETERS	UNITS/MEASURE	VALUES
VOLTAGE	VOLTS-AC	480
AMP TYPE	SINE	
HORSEPOWER	HP	20.9
KILOWATTS	KW	15.6
MAX OPERATING SPEED	RPM	2850
SPEED @ RATED TORQUE	RPM	2400
*CONTINUOUS RATED TORQUE @ 2400 RPM	IN-LBS(INM)	550(2.1)
*CONTINUOUS STALL TORQUE	IN-LBS(INM)	640(2.3)
*CONTINUOUS LINE CURRENT	AMPS(RMS/Φ)	24.9
PEAK TORQUE	IN-LBS(INM)	1920(216.9)
PEAK CURRENT	AMPS(RMS/Φ)	74.7
MAX THEORETICAL ACCEL.	RAD/SEC ²	25,098
TORQUE SENSITIVITY	KI [N-LBS/AMP/RPM] (NINM/AMP/RPM)	25.7(2.91)
BACK EMF (LINE TO LINE)	Vrms/Krpm	162
D.C. RESISTANCE (P-P)	OHMS	.36
INDUCTANCE (P-P)	MILLIHENRIES	4.0
ROTOR INERTIA	Jm	.0765(.00864) w/ Brk
STATIC FRICTION	TT	9.8(1.1)

CONNECTION CHART

RES/THERM/BRK WIRE LEADS	WIRE FUNCTION	WIRE COLOR	TERMINAL FUNCTION	WIRE COLOR
R1	SHLD	WHT/BLK	Φ U	RED
R2	THERM	WHT	Φ V	WHT
R3	THERM	WHT	Φ W	BLK
R4	SIN GND	YEL	PE GND	GRN/YEL
R5	SIN GND	BLK		
R6	COS	RED		
R7	SIN	BLU		
R8	REF	RED/WHT		
R9	REF GND	YEL/WHT		
R10	BRK (-)	BLK		
R11	BRK (+)	RED		

BRAKE INFO:
 INPUT VOLTAGE: 24 VDC
 HOLDING FORCE: 122 Nm [90 FT-LBS] MAX
 CURRENT DRAW: 2.51 AMPS
 RELEASING TIME: 100 ms
 INERTIA: .00150 IN-LBS-SEC²



TOLERANCES UNLESS SPECIFIED

BORER: = H12 ✓
 SURFACE FINISH: = 63 Ra ✓
 DECIMAL .xxx ±.12 (.005)
 DECIMAL .xx ±.25 (.010)
 DECIMAL .x ±.51 (.020)
 FRACTION ±.40 (.016)
 ANGLE .030

REMOVE ALL BURRS, BREAK SHARP EDGES, ZAP PERK (.010)

PROPRIETARY RIGHTS OF CUSTOM MOTORS ARE INCLUDED IN THE INFORMATION PROVIDED HEREIN. THIS INFORMATION IS PROVIDED AS A SERVICE TO OUR CUSTOMERS AND IS NOT TO BE REPRODUCED OR TRANSMITTED IN ANY FORM OR BY ANY MEANS, ELECTRONIC OR MECHANICAL, INCLUDING PHOTOCOPYING, RECORDING, OR BY ANY INFORMATION STORAGE AND RETRIEVAL SYSTEM.

CUSTOM MOTORS INC

460V/KE=162MET/RES/NPT/BRK
 190MM - 2 STK

CUSTOMER: - DRAWING NO. CM1902R162MKRNPBT
 SCALE 1/2:1 DATE 9/7/04 DRAWING NO. CM1902R162MKRNPBT
 FINISH: WATERL: 1/2:1 DATE 9/7/04 DRAWING NO. CM1902R162MKRNPBT
 REV. 1

*25°C AMBIENT WITH A MAXIMUM CASE TEMPERATURE OF 100°C ON THE MOTOR. THERMOSTAT IN STATOR WILL OPEN IF STATOR TEMPERATURE EXCEEDS 155°C. THIS WILL GIVE YOU ~10% HEADROOM IN THE CONTINUOUS TORQUE RATING BEFORE THERMOSTAT OPENS. MOTOR MOUNTED ON A 356 X 356 X 19MM ALUMINUM HEATSINK.