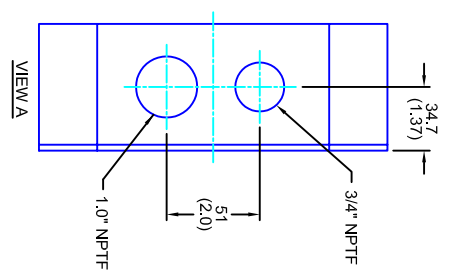
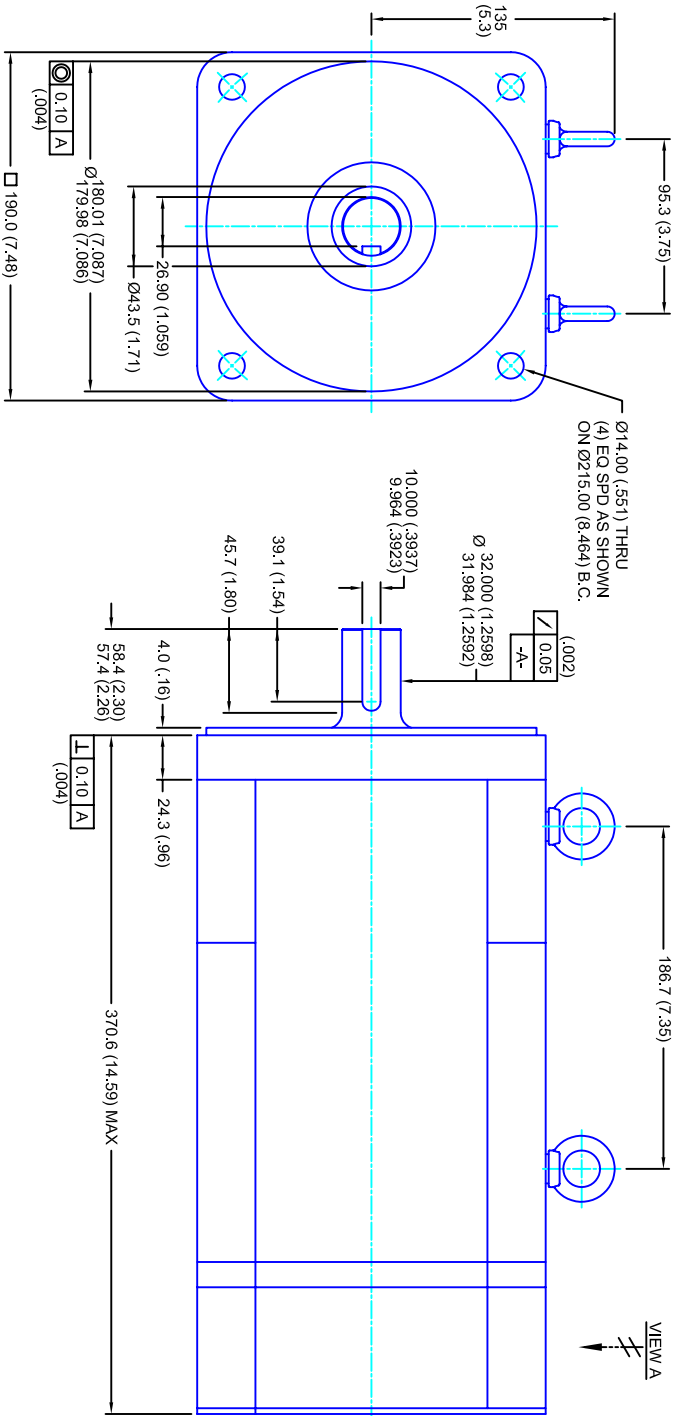


REVISIONS			
REV	DESCRIPTION	DATE	APPD
1	RELEASE DRAWING	11/3/05	



- NOTES:**
1. MILLIMETERS (INCHES)
 2. AXIAL LOAD: 45 KG [100 LBS] MAX
 3. RADIAL LOAD: 113 KG [250 LBS] MAX @ 25.4MM [1.00] FROM FACE
 4. MOTOR SEALED TO IP65
 5. MOTOR SHAFT: G&P STEEL, GRADE 1144
 6. MOTOR FINISH: BLACK MATT FINISH
 7. MOTOR WEIGHT: 44 KG [98 LBS]

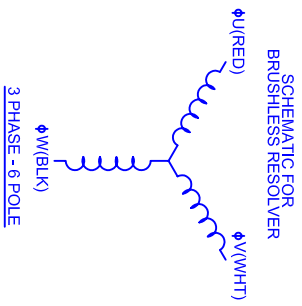
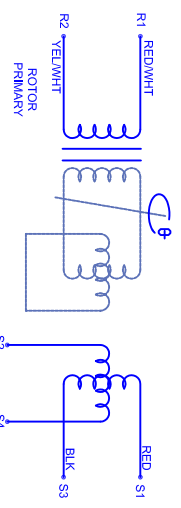
ELECTRICAL DATA

MOTOR PARAMETERS	UNITS/MEASURE	VALUES
VOLTAGE	VOLTS-AC	230
AMP TYPE	SINE	230
HORSEPOWER	HP	20.9
KILOWATTS	KW	15.6
MAX OPERATING SPEED	RPM	2850
SPEED @ RATED TORQUE	RPM	2400
*CONTINUOUS RATED TORQUE @ 2400 RPM	IN-LBS(IN)M	550(2.1)
*CONTINUOUS STALL TORQUE	IN-LBS(IN)M	640(2.3)
*CONTINUOUS LINE CURRENT	AMP(S/RMS/Φ)	24.9
PEAK TORQUE	IN-LBS(IN)M	1920(216.9)
PEAK CURRENT	AMP(S/RMS/Φ)	74.7
MAX THEORETICAL ACCEL.	RAD/SEC ²	25,600
TORQUE SENSITIVITY	KI [N-BS/AMP/RMS/Φ]/(NIN/AMP/RMS/Φ)	25.7(2.91)
BACK EMF (LINE TO LINE)	Vrms/Krpm	162
D.C. RESISTANCE (P-P)	OHMS	.36
INDUCTANCE (P-P)	MILLIHENRIES	4.0
ROTOR INERTIA	Jm	.0750(.00847)
STATIC FRICTION	TT	9.8(1.1)

CONNECTION CHART

RES/THERM WIRE LEADS	WIRE FUNCTION	WIRE COLOR	TERMINAL FUNCTION	WIRE COLOR
R1	SHLD	WHT/BLK	1	Φ U
R2	THERM	WHT	2	Φ V
R3	THERM	WHT	3	Φ W
R4	SIN GND	YEL	-	PE GND
R5	COS GND	BLK		
R6	COS	RED		
R7	SIN	BLU		
R8	REF	RED/WHT		
R9	REF GND	YEL/WHT		
R10				
R11				

MOTOR WIRE LEADS	WIRE FUNCTION	WIRE COLOR
1	Φ U	RED
2	Φ V	WHT
3	Φ W	BLK
-	PE GND	GRN/YEL



TOLERANCES UNLESS SPECIFIED

BORE: = H7 ✓
 BORE: = H7 ✓
 DECIMAL .xxx ±.12 (.005)
 DECIMAL .xx ±.25 (.010)
 DECIMAL .x ±.51 (.020)
 DECIMAL .x ±.40 (.016)
 ANGLE: ±.09

REMOVE ALL BURRS, BREAK SHARP EDGES, ZAP PER (0.10°)

FINISH: CUSTOM MOTOR INC

WATERL: CUSTOMER: -

SCALE: 1/2:1 DATE: 6/26/04 DRAWING NO: CM1902R162MKRNPT

190MM - 2 STK
 460V/KE=162METRES/NPT

PROPRIETARY RIGHTS OF CUSTOM MOTORS ARE INCLUDED IN THE INFORMATION DISCLOSED HEREIN. THIS INFORMATION IS NOT TO BE REPRODUCED OR TRANSMITTED IN ANY FORM OR BY ANY MEANS, ELECTRONIC OR MECHANICAL, INCLUDING PHOTOCOPYING, RECORDING, OR BY ANY INFORMATION STORAGE AND RETRIEVAL SYSTEM.

CUSTOMER: - DRAWN: DFLA SHEET: 1 OF 1

1/2:1 6/26/04 CM1902R162MKRNPT 1