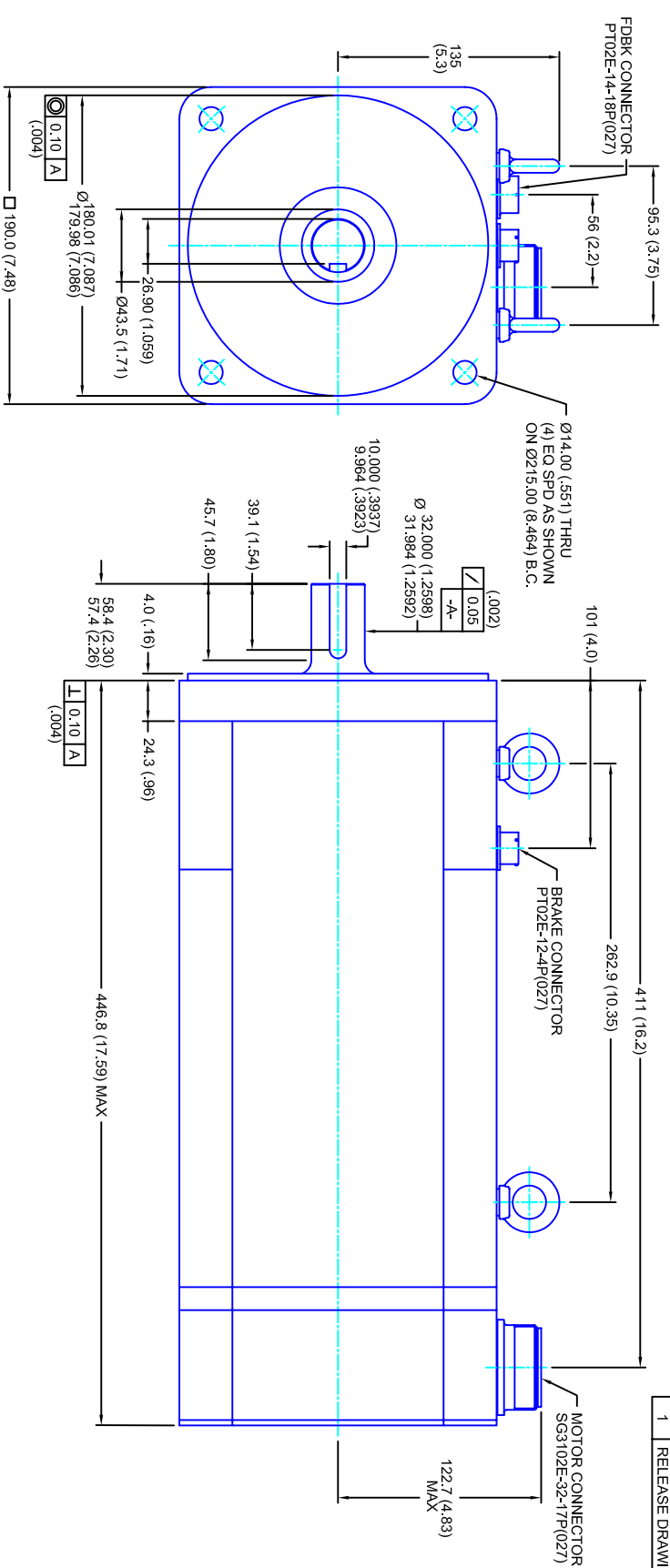


REVISIONS			
REV	DESCRIPTION	DATE	APPD
1	RELEASE DRAWING	11/3/05	



- NOTES:**
1. MILLIMETERS (INCHES)
  2. AXIAL LOAD: 45 KG [ 100 LBS ] MAX
  3. RADIAL LOAD: 113 KG [ 250 LBS ] MAX @ 25.4MM [ 1.00 ] FROM FACE
  4. MOTOR SEALED TO IP65
  5. MOTOR SHAFT: G&P STEEL, GRADE 1144
  6. MOTOR FINISH: BLACK MATT FINISH
  7. MOTOR WEIGHT: 55 KG [ 121 LBS ]

**ELECTRICAL DATA**

MOTOR PARAMETERS	UNITS/MEASURE	VALUES
VOLTAGE	VOLTS-AC	460
AMP TYPE	-	SINE
HORSEPOWER	HP	20.9
KILOWATTS	KW	15.6
MAX OPERATING SPEED	RPM	2850
SPEED @ RATED TORQUE	RPM	2400
*CONTINUOUS RATED TORQUE @ 2400 RPM	IN-LBS(INM)	550(2.31)
*CONTINUOUS STALL TORQUE	IN-LBS(INM)	640(2.31)
*CONTINUOUS LINE CURRENT	AMPS(RMS/Φ)	24.9
PEAK TORQUE	IN-LBS(INM)	1920(216.9)
PEAK CURRENT	AMPS(RMS/Φ)	74.7
MAX THEORETICAL ACCEL.	RAD/SEC <sup>2</sup>	25,098
TORQUE SENSITIVITY	KI [N-LS/AMP/RMS/Φ] [IN-AMP/RMS/Φ]	25.7(2.31)
BACK EMF (LINE TO LINE)	Vrms/Krpm	162
D.C. RESISTANCE (P-P)	OHMS	.36
INDUCTANCE (P-P)	MILLIHENRIES	4.0
ROTOR INERTIA	IN-LBS-SEC <sup>2</sup> [KG-M <sup>2</sup> ]	.0765(1.0864) W/BLK
STATIC FRICTION	TT	9.8(1.1)

\*25°C AMBIENT WITH A MAXIMUM CASE TEMPERATURE OF 100°C ON THE MOTOR. THERMOSTAT IN STATOR WILL OPEN IF STATOR TEMPERATURE EXCEEDS 155°C. THIS WILL GIVE YOU ~10% HEADROOM IN THE CONTINUOUS TORQUE RATING BEFORE THERMOSTAT OPENS. MOTOR MOUNTED ON A 356 X 356 X 19MM ALUMINUM HEATSINK.

**ENCODER INFO:**

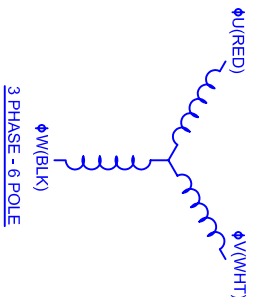
5V - 2048L COMMUTATING

**BRAKE INFO:**

INPUT VOLTAGE: 24 VDC  
 HOLDING FORCE: 122 Nm [ 90 FT-LBS ] MAX  
 CURRENT DRAW: 2.51 AMPS  
 RELEASING TIME: 100 ms  
 INERTIA: .00150 IN-LBS-SEC<sup>2</sup>

**CONNECTION CHART**

PT02E-14-18P(027)				SG3102E-32-17P(027)			
ENCTHERM WIRE LEADS	WIRE FUNCTION	WIRE COLOR	WIRE FUNCTION	WIRE COLOR	WIRE FUNCTION	WIRE COLOR	WIRE FUNCTION
A	CH A	BLU	A	Φ U	RED	B	Φ V
B	CH A	BLU	B	Φ W	WHT	C	Φ W
C	CH A	BLU/BLK	C	Φ W	BLK	D	PE GND
D	GND CABLE	SHLD	D	Φ W	BLK		
E	CH U	BRN					
F	CH V	GRY					
G	CH W	WHT					
H	CH W	WHT/BLK					
J	+5VDC	RED					
K	THERM	WHT					
L	CH Z	YEL					
M	CH B	GRN					
N	CH B	GRN					
P	CH BI	GRY/BLK					
R	CH UI	BRN/BLK					
S	CH VI	GRY/BLK					
T	GND	BLK					
U	CH ZI	YEL/BLK					



**CUSTOM MOTORS INC**

190MM - 2 STK  
 460V/KE=162/MET/2048/CONN/BRK

TOLERANCES UNLESS SPECIFIED	
BORING	= H7
BORE	= H12
DECIMAL .xxx	± .12 (0.05)
DECIMAL .xx	± .25 (0.10)
DECIMAL .x	± .51 (0.20)
DECIMAL	± .40 (0.16)
ANGLE	± .030
REMOVE ALL BURRS/BREAK SHARP EDGES, ZAMPER (0.10°)	
FINISH:	
WATERLAL:	
SCALE	1/2:1
DATE	9/7/04
DRAWING NO.	CM1902R162MK2048CSB
CUSTOMER:	
DRAWN:	DFLA
SHEET:	1 OF 1
REV.	1