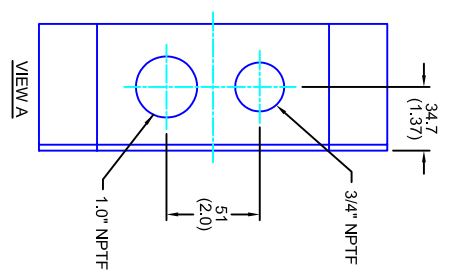
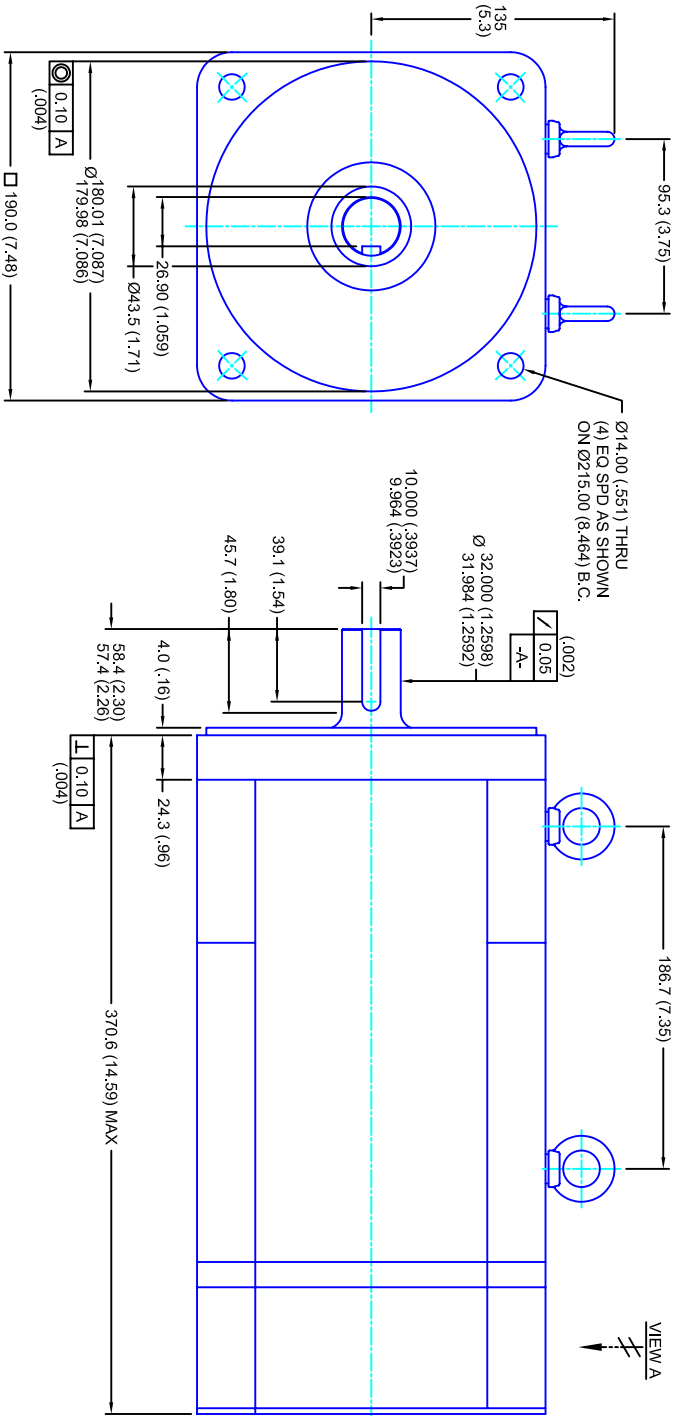


REVISIONS			
REV	DESCRIPTION	DATE	APPD
1	RELEASE DRAWING	12/1/04	



- NOTES:**
1. MILLIMETERS (INCHES)
  2. AXIAL LOAD: 45 KG [100 LBS ] MAX
  3. RADIAL LOAD: 113 KG [250 LBS ] MAX @ 25.4 [1.00] FROM FACE
  4. MOTOR SEALED TO IP65
  5. MOTOR SHAFT: G&P STEEL, GRADE 1144
  6. MOTOR FINISH: BLACK MATT FINISH
  7. MOTOR WEIGHT: 44 KG [98 LBS ]

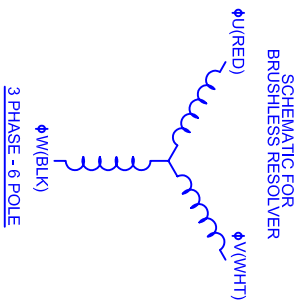
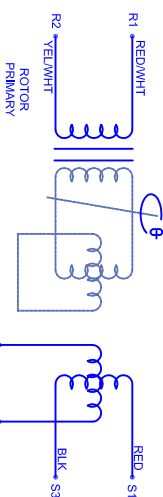
**ELECTRICAL DATA**

MOTOR PARAMETERS	UNITS/MEASURE	VALUES
VOLTAGE	VOLTS-AC	230
AMP TYPE	-	SINE
HORSEPOWER	HP	20.9
KILOWATTS	KW	15.6
MAX OPERATING SPEED	RPM	3000
SPEED @ RATED TORQUE	RPM	2400
*CONTINUOUS RATED TORQUE @ 2400 RPM	IN-LBS(INM)	550(2.1)
*CONTINUOUS STALL TORQUE	IN-LBS(INM)	640(2.3)
*CONTINUOUS LINE CURRENT	AMPS(RMS/Φ)	50.4
PEAK TORQUE	IN-LBS(INM)	1780(201.1)
PEAK CURRENT	AMPS(RMS/Φ)	140.2
MAX THEORETICAL ACCEL.	RAD/SEC <sup>2</sup>	23,733
TORQUE SENSITIVITY	KI [N-BS/AMP/RMS/Φ]/(NIN-AMP/RMS/Φ)	12.7(1.44)
BACK EMF (LINE TO LINE)	Vrms/Krpm	80
D.C. RESISTANCE (P-P)	OHMS	.09
INDUCTANCE (P-P)	MILLIHENRIES	1.0
ROTOR INERTIA	Jm	.0750(.00847)
STATIC FRICTION	TT	9.8(1.1)

**CONNECTION CHART**

RES/THERM WIRE LEADS	WIRE FUNCTION	WIRE COLOR	TERMINAL FUNCTION	WIRE COLOR
R1	SHLD	WHT/BLK	1	RED
R2	THERM	WHT	2	WHT
R3	THERM	WHT	3	ΦV
R4	SIN GND	YEL	-	BLK
R5	COS GND	BLK	-	GRN/VEL
R6	COS	RED	-	-
R7	SIN	BLU	-	-
R8	REF	RED/WHT	-	-
R9	REF GND	YEL/WHT	-	-
R10	-	-	-	-
R11	-	-	-	-

MOTOR WIRE LEADS	WIRE FUNCTION	WIRE COLOR
1	ΦU	RED
2	ΦV	WHT
3	ΦW	BLK
-	PE GND	GRN/VEL



**TOLERANCES UNLESS SPECIFIED**

BORER: = H12 ✓  
 SURFACE FINISH: = 63 Ra ✓  
 DECIMAL .xxx = .12 (.005)  
 DECIMAL .xx = .25 (.010)  
 DECIMAL .x = .51 (.020)  
 DECIMAL . = .40 (.016)  
 ANGLE (MM/INCHES) = 0.80

**REMOVE ALL BURRS/BREAK SHARP EDGES AS SHOWN (0.10°)**

**PROPRIETARY RIGHTS OF CUSTOM MOTORS ARE INCLUDED IN THE INFORMATION DISCLOSED HEREIN. THIS INFORMATION IS NOT TO BE REPRODUCED OR TRANSMITTED IN ANY FORM OR BY ANY MEANS, ELECTRONIC OR MECHANICAL, INCLUDING PHOTOCOPYING, RECORDING, OR BY ANY INFORMATION STORAGE AND RETRIEVAL SYSTEM.**

**CUSTOMER: -** DRAWING NO. **230V/KE-80/MET/RES/NPT** DRAWN: DFLA SHEET: 1 OF 1

**SCALE** 1/2:1 **DATE** 6/26/04 **MATERIAL:** CUSTOM MOTORS INC

1/2:1 6/26/04 CM1902Q80MKRNP 1