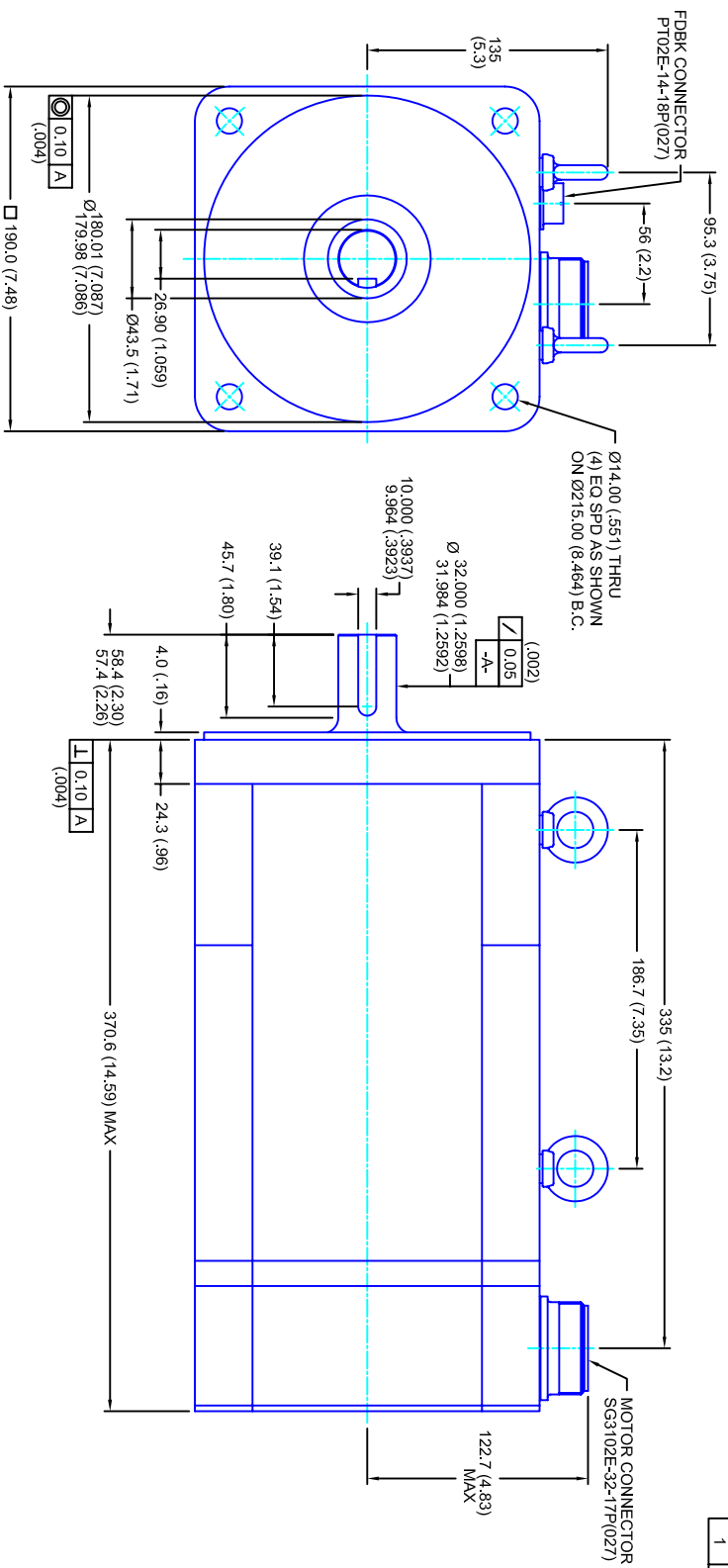


REVISIONS			
REV	DESCRIPTION	DATE	APPD
1	RELEASE DRAWING	11/3/05	



- NOTES:**
1. MILLIMETERS (INCHES)
 2. AXIAL LOAD: 45 KG [100 LBS] MAX
 3. RADIAL LOAD: 113 KG [250 LBS] MAX @ 25.4MM [1.00] FROM FACE
 4. MOTOR SEALED TO IP65
 5. MOTOR SHAFT: G&P STEEL, GRADE 1144
 6. MOTOR FINISH: BLACK MATT FINISH
 7. MOTOR WEIGHT: 44 KG [98 LBS]

ELECTRICAL DATA

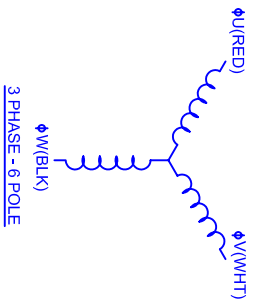
MOTOR PARAMETERS	UNITS/MEASURE	VALUES
VOLTAGE	VOLTS-AC	230
AMP TYPE	-	SINE
HORSEPOWER	HP	10.5
KILOWATTS	KW	7.8
MAX OPERATING SPEED	RPM	1400
SPEED @ RATED TORQUE	RPM	1200
*CONTINUOUS RATED TORQUE @ 1200 RPM	IN-LBS(INM)	550(2.3)
*CONTINUOUS STALL TORQUE	IN-LBS(INM)	640(2.3)
*CONTINUOUS LINE CURRENT	AMPS(RMS/Φ)	24.9
PEAK TORQUE	IN-LBS(INM)	1920(216.9)
PEAK CURRENT	AMPS(RMS/Φ)	74.7
MAX THEORETICAL ACCEL.	RAD/SEC ²	25,600
TORQUE SENSITIVITY	KI [N-BS/AMP/RMS/Φ] (NIN-AMP/RMS/Φ)	25.7(2.91)
BACK EMF (LINE TO LINE)	Vrms/Krpm	162
D.C. RESISTANCE (P-P)	OHMS	.36
INDUCTANCE (P-P)	MILLIHENRIES	4.0
ROTOR INERTIA	IN-LBS-SEC ² [KG-M ²]	.0750(.00847)
STATIC FRICTION	TT	9.8(1.1)

ENCODER INFO:

SV - 2048L COMMUTATING

CONNECTION CHART

PT02E-14-18P(027)				SG3102E-32-17P(027)			
PIN	WIRE FUNCTION	WIRE COLOR	WIRE FUNCTION	PIN	WIRE FUNCTION	WIRE COLOR	WIRE FUNCTION
A	CH A	WHT	Φ U	A	Φ U	RED	
B	CH A	BLU	Φ V	B	Φ V	WHT	
C	CH A	BLU/BLK	Φ W	C	Φ W	BLK	
D	GND CABLE	SHLD	PE GND	D	PE GND	GRN/YEL	
E	CH U	BRN					
F	CH V	GRY					
G	CH W	WHT					
H	CH W	WHT/BLK					
J		-					
K	+5VDC	RED					
L	THERM	WHT					
M	CH Z	YEL					
N	CH B	GRN					
P	CH B	GRN/BLK					
R	CH U	BRN/BLK					
S	CH V	GRY/BLK					
T	GND	BLK					
U	CH Z	YEL/BLK					



CUSTOM MOTORS INC

190MM - 2 STK
230V/KE=162MET/2048/CONN

TOLERANCES UNLESS SPECIFIED	
BORER:	= H2
SURFACE FINISH:	= 63 Ra ✓
DECIMAL .xxx	= .12 (.005)
DECIMAL .xx	= .25 (.010)
DECIMAL .x	= .51 (.020)
DECIMAL .	= 1.01 (.040)
ANGLE	= 0.50

REMOVE ALL BURRS/BREAK SHARP EDGES AS SHOWN (0.10")

PROPRIETARY RIGHTS OF CUSTOM MOTORS ARE INCLUDED IN THE INFORMATION DISCLOSED HEREIN. THIS INFORMATION IS NOT TO BE REPRODUCED OR TRANSMITTED IN ANY FORM OR BY ANY MEANS, ELECTRONIC OR MECHANICAL, INCLUDING PHOTOCOPYING, RECORDING, OR BY ANY INFORMATION STORAGE AND RETRIEVAL SYSTEM.

CUSTOMER: -

SCALE: 1/2:1

DATE: 9/7/04

DRAWING NO.: CM1902Q162MK2048CS

DRAWN: DFLA

SHEET: 1 OF 1

REV: 1