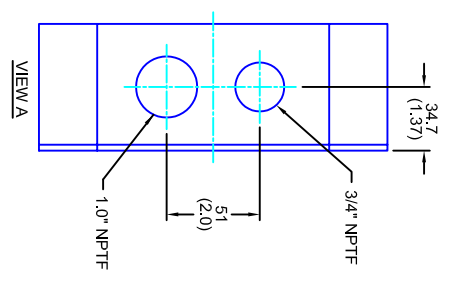
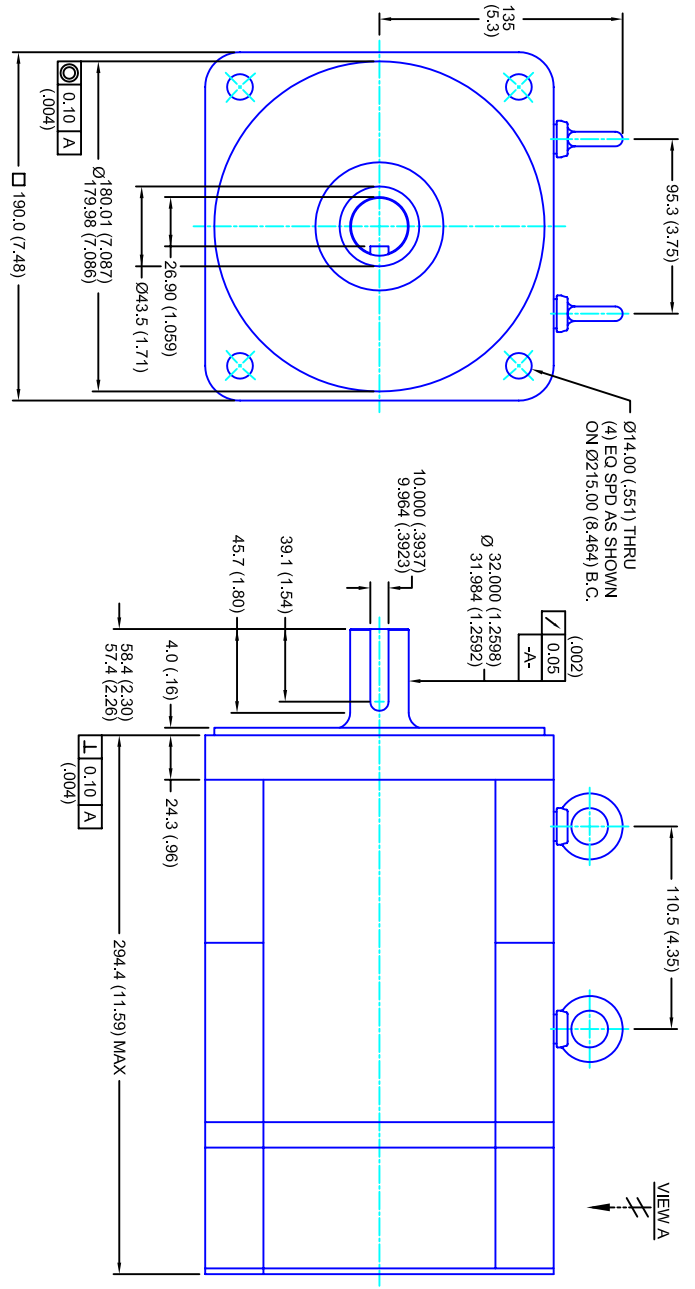


REVISIONS			
REV	DESCRIPTION	DATE	APPD
1	RELEASE DRAWING	11/3/05	



- NOTES:**
1. MILLIMETERS (INCHES)
  2. AXIAL LOAD: 45 KG [100 LBS ] MAX
  3. RADIAL LOAD: 113 KG [250 LBS ] MAX @ 25.4MM [1.00] FROM FACE
  4. MOTOR SEALED TO IP65
  5. MOTOR SHAFT: G&P STEEL, GRADE 1144
  6. MOTOR FINISH: BLACK MATT FINISH
  7. MOTOR WEIGHT: 30 KG [66 LBS ]

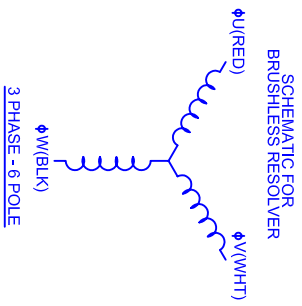
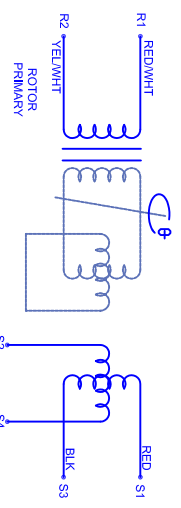
**ELECTRICAL DATA**

MOTOR PARAMETERS	UNITS/MEASURE	VALUES
VOLTAGE	VOLTS-AC	460
AMP TYPE	-	SINE
HORSEPOWER	HP	13.1
KILOWATTS	KW	9.8
MAX OPERATING SPEED	RPM	2850
SPEED @ RATED TORQUE	RPM	2400
*CONTINUOUS RATED TORQUE @ 2400 RPM	IN-LBS(INM)	344[138.9]
*CONTINUOUS STALL TORQUE	IN-LBS(INM)	400[145.2]
CONTINUOUS LINE CURRENT	AMP(S/RMS/Φ)	15.6
PEAK TORQUE	IN-LBS(INM)	1200[135.6]
PEAK CURRENT	AMP(S/RMS/Φ)	46.7
MAX THEORETICAL ACCEL.	RAD/SEC <sup>2</sup>	27,778
TORQUE SENSITIVITY	KI [N-BS/AMP/RMS/Φ]/(NIN-AMP/RMS/Φ)	25.7[2.91]
BACK EMF (LINE TO LINE)	Vrms/Krpm	162
D.C. RESISTANCE (P-P)	OHMS	.95
INDUCTANCE (P-P)	MILLIHENRIES	9.0
ROTOR INERTIA	IN-LBS-SEC <sup>2</sup> [KG-M <sup>2</sup> ]	.0432[.00488]
STATIC FRICTION	TT	82[.93]

**CONNECTION CHART**

RES/THERM WIRE LEADS	WIRE FUNCTION	WIRE COLOR	TERMINAL FUNCTION	WIRE COLOR
R1	SHLD	WHT/BLK	1	RED
R2	THERM	WHT	2	WHT
R3	THERM	WHT	3	WHT
R4	SIN GND	YEL	Φ V	BLK
R5	COS GND	BLK	PE GND	GRN/YEL
R6	COS	RED		
R7	SIN	BLU		
R8	REF	RED/WHT		
R9	REF GND	YEL/WHT		
R10				
R11				

MOTOR WIRE LEADS	WIRE FUNCTION	WIRE COLOR
1	Φ U	RED
2	Φ V	WHT
3	Φ W	BLK
-	PE GND	GRN/YEL



**CUSTOM MOTORS INC**

190MM - 1 STK  
460V/KE=162MET/RES/NPT

TOLERANCES UNLESS SPECIFIED	
BORER:	= H2
DECIMAL .xxx	= .12 (.005)
DECIMAL .xx	= .25 (.010)
DECIMAL .x	= .51 (.020)
ANGLE	= .40 (.016)
ANGLE	= .030
REMOVE ALL BURRS, BREAK SHARP EDGES, AS SHOWN (0.10°)	
FINISH:	STAINLESS STEEL
WATERLAL:	
SCALE	1/2:1
DATE	10/18/04
DRAWING NO.	CM1901R162MKRNPT
CUSTOMER:	-
DRAWN:	DJLA
SHEET:	1 OF 1
REV.	1