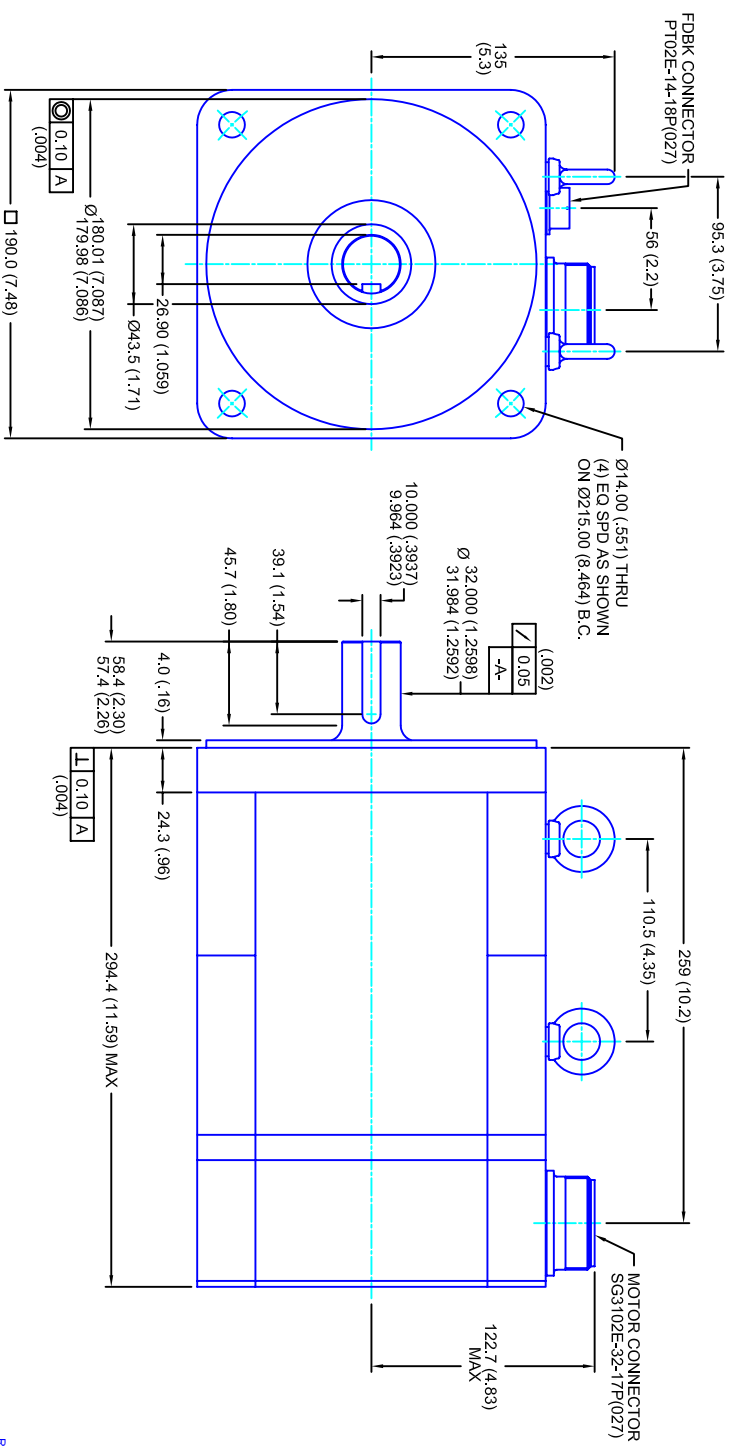


REVISIONS			
REV	DESCRIPTION	DATE	APPD
1	RELEASE DRAWING	11/3/05	



- NOTES:**
1. MILLIMETERS (INCHES)
 2. AXIAL LOAD: 45 KG [100 LBS] MAX
 3. RADIAL LOAD: 113 KG [250 LBS] MAX @ 25.4MM [1.00] FROM FACE
 4. MOTOR SEALED TO IP65
 5. MOTOR SHAFT: G&P STEEL, GRADE 1144
 6. MOTOR FINISH: BLACK MATT FINISH
 7. MOTOR WEIGHT: 30 KG [66 LBS]

ELECTRICAL DATA

MOTOR PARAMETERS	UNITS/MEASURE	VALUES
VOLTAGE	VOLTS-AC	460
AMP TYPE	-	SINE
HORSEPOWER	HP	13.1
KILOWATTS	KW	9.8
MAX OPERATING SPEED	RPM	2850
SPEED @ RATED TORQUE	RPM	2400
*CONTINUOUS RATED TORQUE @ 2400 RPM	IN-LBS(INM)	344[38.9]
*CONTINUOUS STALL TORQUE	IN-LBS(INM)	400[45.2]
*CONTINUOUS LINE CURRENT	AMP(S/RMS/Φ)	15.6
PEAK TORQUE	IN-LBS(INM)	1200[135.6]
PEAK CURRENT	AMP(S/RMS/Φ)	46.7
MAX THEORETICAL ACCEL.	RAD/SEC ²	27.778
TORQUE SENSITIVITY	KI [N-BS/AMP/RMS/Φ]/(N/M/AMP/RMS/Φ)	25.7[2.91]
BACK EMF (LINE TO LINE)	Vrms/Krpm	162
D.C. RESISTANCE (P-P)	OHMS	.95
INDUCTANCE (P-P)	MILLIHENRIES	9.0
ROTOR INERTIA	IN-LBS-SEC ² [KG-M ²]	.0432[.00488]
STATIC FRICTION	TT	8.2[.93]

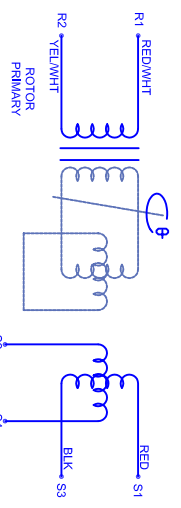
CONNECTION CHART

PT02E-14-18P(027)

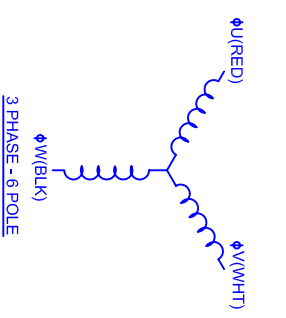
REST/TERM	WIRE FUNCTION	WIRE COLOR
PN	RES SHLD	WHT/BLK
A	REF	RED/WHT
B	SIN GND	BLK
C	COS GND	BLU
D	RES SHLD	WHT/BLK
E	REF	RED/WHT
F	SIN GND	YEL
G	COS GND	BLK
H	SIN	BLU
J	-	-
K	-	-
L	-	-
M	-	-
N	TERM	WHT
P	-	-
R	REF GND	YEL/WHT
S	COS	RED
T	-	-
U	TERM	WHT

SG3102E-32-17P(027)

MOTOR WIRE LEADS	WIRE FUNCTION	WIRE COLOR
A	Φ U	RED
B	Φ V	WHT
C	Φ W	BLK
D	PE GND	GRN/YEL



SCHEMATIC FOR BRUSHLESS RESOLVER



CUSTOM MOTORS INC

190MM - 1 STK

460V/KE=162MET/RES/CONN

TOLERANCES UNLESS SPECIFIED			
BORH:	= H12	✓	
DECIMAL .xxx	± .12 (005)		
DECIMAL .xx	± .25 (010)		
DECIMAL .x	± .51 (020)		
ANGLE (MM/INCHES)	± .030		
REMOVE ALL BURRS, BREAK SHARP EDGES, AS PER (010)			
FINISH:			
SCALE	DATE	DRAWING NO.	REV.
1/2:1	10/18/04	CM1901R162MKRCS	1
CUSTOMER:		DRAWN: DFLA	SHEET: 1 OF 1

*25°C AMBIENT WITH A MAXIMUM CASE TEMPERATURE OF 100°C ON THE MOTOR. THERMOSTAT IN STATOR WILL OPEN IF STATOR TEMPERATURE EXCEEDS 155°C. THIS WILL GIVE YOU ~10% HEADROOM IN THE CONTINUOUS TORQUE RATING BEFORE THERMOSTAT OPENS. MOTOR MOUNTED ON A 356 X 356 X 19MM ALUMINUM HEATSINK.