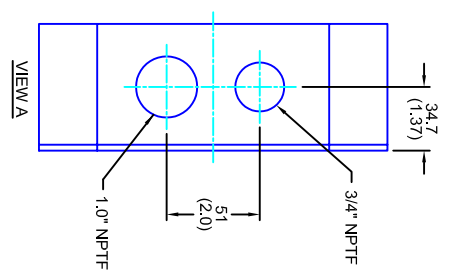
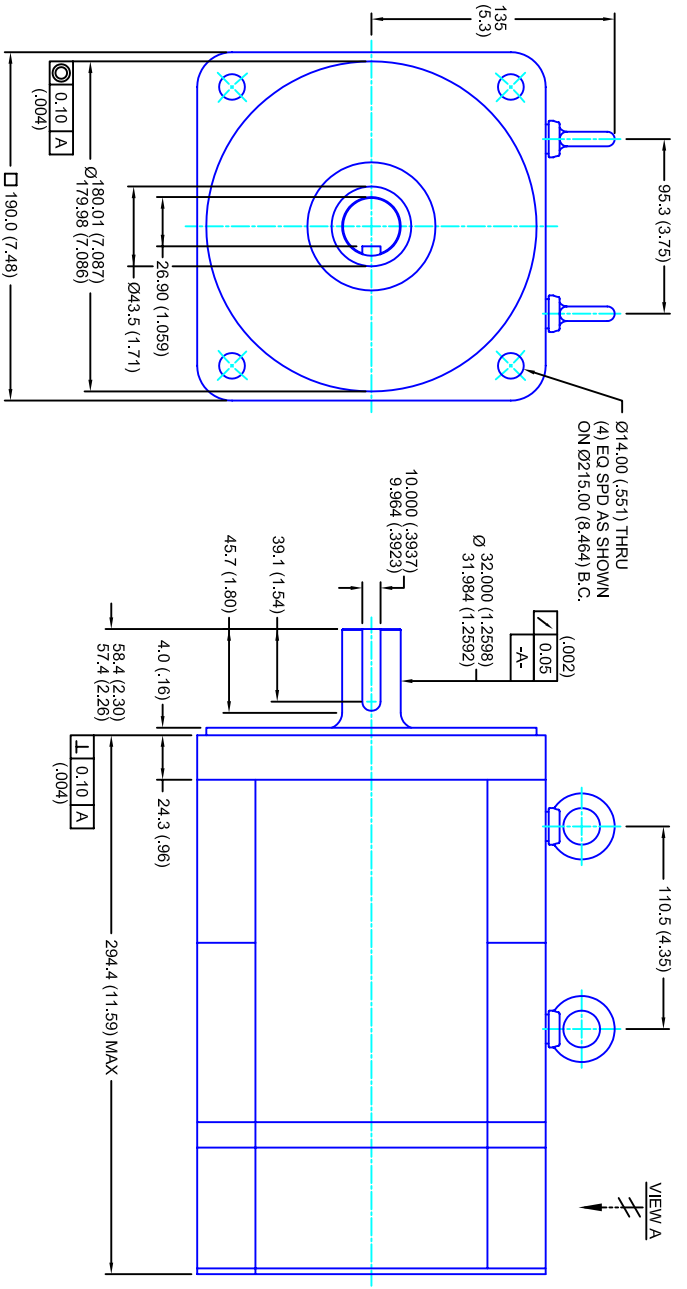


REVISIONS			
REV	DESCRIPTION	DATE	APPD
1	RELEASE DRAWING	11/3/05	



- NOTES:**
1. MILLIMETERS (INCHES)
 2. AXIAL LOAD: 45 KG [100 LBS] MAX
 3. RADIAL LOAD: 113 KG [250 LBS] MAX @ 25.4MM [1.00] FROM FACE
 4. MOTOR SEALED TO IP65
 5. MOTOR SHAFT: G&P STEEL, GRADE 1144
 6. MOTOR FINISH: BLACK MATT FINISH
 7. MOTOR WEIGHT: 30 KG [66 LBS]

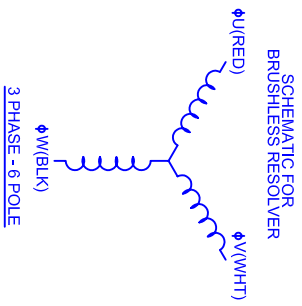
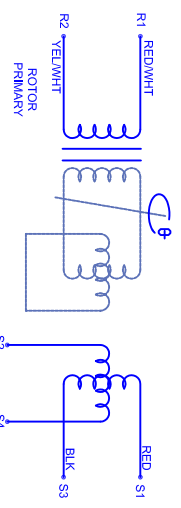
ELECTRICAL DATA

MOTOR PARAMETERS	UNITS/MEASURE	VALUES
VOLTAGE	VOLTS-AC	230
AMP TYPE	-	SINE
HORSEPOWER	HP	6.5
KILOWATTS	KW	4.9
MAX OPERATING SPEED	RPM	1400
SPEED @ RATED TORQUE	RPM	1200
*CONTINUOUS RATED TORQUE @ 1200 RPM	IN-LBS(INM)	344[38.9]
*CONTINUOUS STALL TORQUE	IN-LBS(INM)	400[45.2]
CONTINUOUS LINE CURRENT	AMPS(RMS/Φ)	15.6
PEAK TORQUE	IN-LBS(INM)	1200[135.6]
PEAK CURRENT	AMPS(RMS/Φ)	46.7
MAX THEORETICAL ACCEL.	RAD/SEC ²	27,778
TORQUE SENSITIVITY	KI [N-LBS/AMP/RMS/Φ]/(NIN/AMP/RMS/Φ)	25.7[2.91]
BACK EMF (LINE TO LINE)	Vrms/Krpm	162
D.C. RESISTANCE (P-P)	OHMS	.95
INDUCTANCE (P-P)	MILLIHENRIES	9.0
ROTOR INERTIA	IN-LBS-SEC ² [KG-M ²]	.0432[.00488]
STATIC FRICTION	TT	82[.93]

CONNECTION CHART

RES/THERM WIRE LEADS	WIRE FUNCTION	WIRE COLOR	TERMINAL FUNCTION	WIRE COLOR
R1	SHLD	WHT/BLK	1	RED
R2	THERM	WHT	2	WHT
R3	THERM	WHT	3	BLK
R4	SIN GND	YEL	Φ V	WHT
R5	COS GND	BLK	PE GND	GRN/YEL
R6	COS	RED		
R7	SIN	BLU		
R8	REF	RED/WHT		
R9	REF GND	YEL/WHT		
R10	-	-		
R11	-	-		

MOTOR WIRE LEADS	WIRE FUNCTION	WIRE COLOR
1	Φ U	RED
2	Φ V	WHT
3	Φ W	BLK
-	PE GND	GRN/YEL



CUSTOM MOTORS INC

190MM - 1 STK
230V/KE=162MET/RES/NPT

TOLERANCES UNLESS SPECIFIED	BORER: = H12 ✓
FINISH: SHARP EDGES, ZAMPERK (0.10°)	DECIMAL .xxx = ±.12 (.005)
REMOVE ALL BURRS, BREAK SHARP EDGES, ZAMPERK (0.10°)	DECIMAL .xx = ±.25 (.010)
WATERL:	DECIMAL .x = ±.51 (.020)
SCALE 1/2:1	DATE 10/18/04
DRAWING NO. CM1901Q162MKRNPT	DRAWN: DFLA
CUSTOMER: -	SHEET: 1 OF 1
REV. 1	