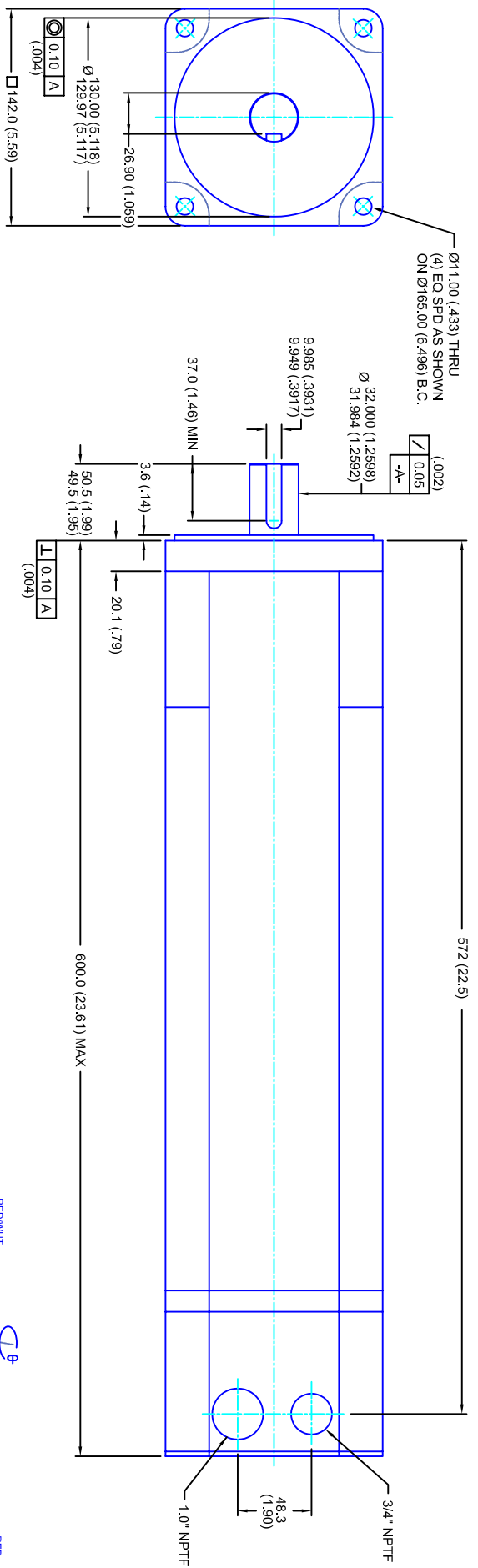


REVISIONS			
REV	DESCRIPTION	DATE	APPD
1	QUOTE DRAWING	2/28/05	



- NOTES:**
1. MILLIMETERS (INCHES)
 2. AXIAL LOAD: 23 KG [50 LBS] MAX
 3. RADIAL LOAD: 68 KG [150 LBS] MAX @ 25.4MM [1.00] FROM FACE
 4. MOTOR SEALED TO IP65
 5. MOTOR SHAFT: 416 STAINLESS STEEL
 6. MOTOR FINISH: BLACK MATT FINISH
 7. MOTOR WEIGHT: 44.5 KG [98 LBS]

ELECTRICAL DATA

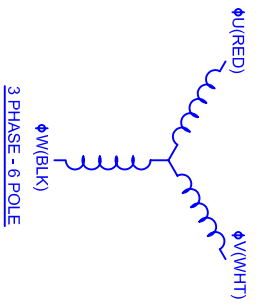
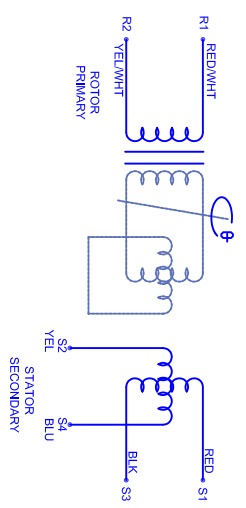
MOTOR PARAMETERS	UNITS/MEASURE	VALUES
VOLTAGE	VOLTS-AC	460
AMP TYPE	-	SINE
HORSEPOWER	HP	12.4
KILOWATTS	KW	9.3
MAX OPERATING SPEED	RPM	3400
SPEED @ RATED TORQUE	RPM	2800
*CONTINUOUS RATED TORQUE @ 2800 RPM	IN-LBS(IN)M	280(121.6)
*CONTINUOUS LINE CURRENT	AMPS(RMS/Φ)	19.7
PEAK TORQUE	IN-LBS(IN)M	108(1122.1)
PEAK CURRENT	AMPS(RMS/Φ)	59.1
MAX THEORETICAL ACCEL.	RAD/SEC ²	28,904
TORQUE SENSITIVITY	KI [N-SS/AMP/RMS/Φ]/(IN-AMP/RMS/Φ)	18.3(2.06)
BACK EMF (LINE TO LINE)	Vrms/Krpm	115
D.C. RESISTANCE (P-P)	OHMS	.22
INDUCTANCE (P-P)	MILLIHENRIES	1.9
ROTOR INERTIA	IN-LBS-SEC ² [KG-M ²]	.037(4(.00423)) w/ Brk
STATIC FRICTION	TT	4.2(0.47)

CONNECTION CHART

RES/THERM WIRE LEADS	WIRE FUNCTION	WIRE COLOR
R1	GND/SHLD	WHT/BLK
R2	THERM	WHT
R3	SIN GND	YEL
R4	COS GND	BLK
R5	SIN	BLU
R6	COS	RED
R7	REF	RED/WHT
R8	REF	YEL/WHT
R9	BRK (-)	BLK
R10	BRK (+)	RED

MOTOR WIRE LEADS	WIRE FUNCTION	WIRE COLOR
1	ΦV	RED
2	ΦW	WHT
3	ΦW	BLK
4	PE GND	GRN/YEL

BRAKE INFO:
 INPUT VOLTAGE: 24 VDC
 HOLDING FORCE: 40.7 Nm [360 IN-LBS] MAX
 CURRENT DRAW: 1.13 AMPS
 RELEASING TIME: 100 ms
 INERTIA: .00041 IN-LBS-SEC²



TOLERANCES UNLESS SPECIFIED

BORER: = H12 ✓
 DECIMAL: .xxx ±.12 (.005)
 DECIMAL: .xx ±.25 (.010)
 DECIMAL: .x ±.51 (.020)
 ANGLE: ±.09

REMOVE ALL BURRS/BREAK SHARP EDGES AS SHOWN (0.10°)

PROPRIETARY RIGHTS OF CUSTOM MOTORS ARE INCLUDED IN THE INFORMATION DISCLOSED HEREIN. THIS INFORMATION IS NOT TO BE REPRODUCED OR TRANSMITTED IN ANY FORM OR BY ANY MEANS, ELECTRONIC OR MECHANICAL, INCLUDING PHOTOCOPYING, RECORDING, OR BY ANY INFORMATION STORAGE AND RETRIEVAL SYSTEM.

CUSTOM MOTORS INC

460V/KE=115M/ET/RES/NP/BRK

CUSTOMER: - DRAWING NO. CM1424R115MKRNP/PTB

SCALE: 1/2:1 DATE: 9/7/04

142MM - 4 STK

DRAWN: DFLA SHEET: 1 OF 1

REV: 1