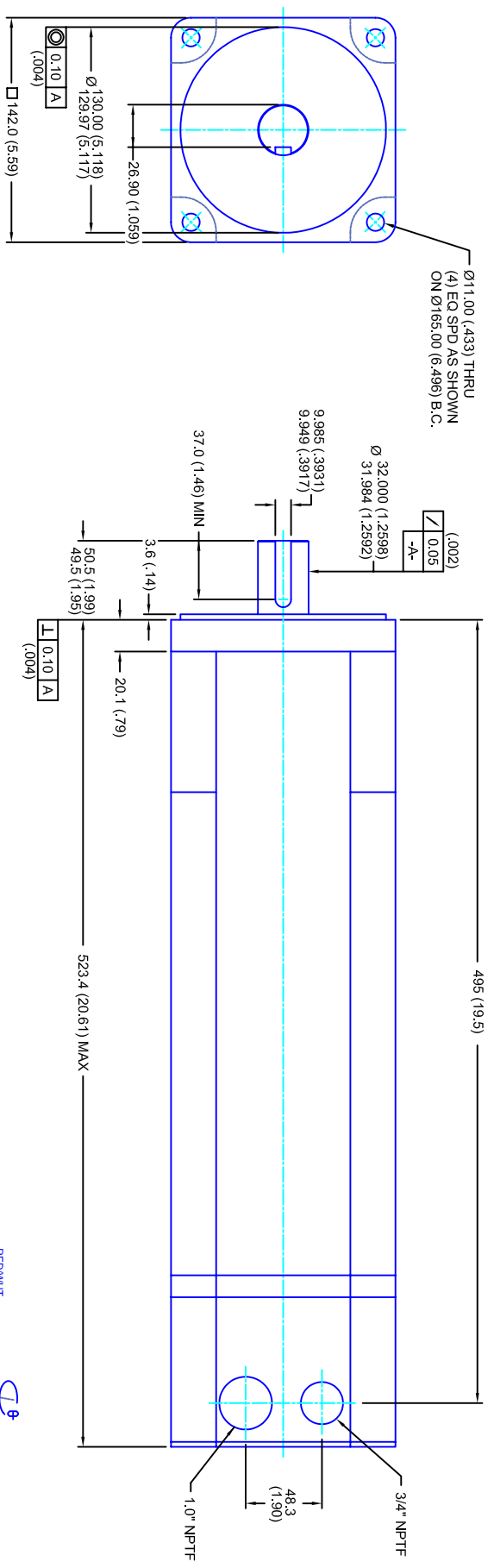


REVISIONS			
REV	DESCRIPTION	DATE	APPD
1	RELEASE DRAWING	8/13/04	



- NOTES:**
1. MILLIMETERS (INCHES)
 2. AXIAL LOAD: 23 KG [50 LBS] MAX
 3. RADIAL LOAD: 68 KG [150 LBS] MAX @ 25.4MM [1.00] FROM FACE
 4. MOTOR SEALED TO IP65
 5. MOTOR SHAFT: 416 STAINLESS STEEL
 6. MOTOR FINISH: BLACK MATT FINISH
 7. MOTOR WEIGHT: 39.3 KG [87 LBS]

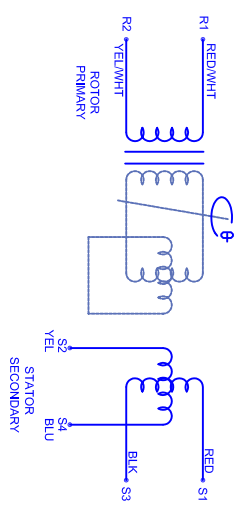
ELECTRICAL DATA

MOTOR PARAMETERS	UNITS/MEASURE	VALUES
VOLTAGE	VOLTS-AC	230
AMP TYPE	-	SINE
HORSEPOWER	HP	10.2
KILOWATTS	KW	7.6
MAX OPERATING SPEED	RPM	2400
SPEED @ RATED TORQUE	RPM	2100
*CONTINUOUS RATED TORQUE @ 2100 RPM	IN-LBS(INM)	300(124.6)
*CONTINUOUS LINE CURRENT	AMPS(RMS/Φ)	36(14.7)
CONTINUOUS LINE TORQUE	IN-LBS(INM)	28.3
PEAK TORQUE	IN-LBS(INM)	108(1122.1)
PEAK CURRENT	AMPS(RMS/Φ)	85.1
TORQUE SENSITIVITY	KI [N-LBS/AMP/RMS/Φ] [INM/AMP/RMS/Φ]	29.216
BACK EMF (LINE TO LINE)	Vrms/Krpm	80
D.C. RESISTANCE (P-P)	OHMS	.12
INDUCTANCE (P-P)	MILLIHENRIES	1.1
ROTOR INERTIA	IN-LBS-SEC ² [KG-M ²]	.0370(.00418)
STATIC FRICTION	TT	4.2(0.47)

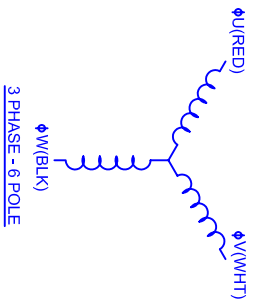
CONNECTION CHART

RES/TERM	WIRE FUNCTION	WIRE COLOR	WIRE COLOR
R1	GND/SHLD	WHT/BLK	WHT
R2	THERM	WHT	WHT
R3	THERM	WHT	WHT
R4	SIN GND	YEL	BLK
R5	COS GND	BLK	RED
R6	COS	RED	BLU
R7	SIN	BLU	RED/WHT
R8	REF	RED/WHT	YEL/WHT
R9	REF GND	YEL/WHT	-
R10	-	-	-
R11	-	-	-

TERM	WIRE FUNCTION	WIRE COLOR
1	ΦU	RED
2	ΦV	WHT
3	ΦW	BLK
4	PE GND	GRN/YEL



SCHEMATIC FOR BRUSHLESS RESOLVER



142MM - 4 STK
230V/KE-80/MET/RES/NPT

TOLERANCES UNLESS SPECIFIED							
BORER:	= H12						
DECIMAL .xxx	= .12 (.005)						
DECIMAL .xx	= .25 (.010)						
DECIMAL .x	= .51 (.020)						
ANGLE	= .40 (.016)						
ANGLE (MM INCHES)	= .030						
REMOVE ALL BURRS/BREAK SHARP EDGES AS SHOWN (0.10°)							
FINISH:							
WATERAL:							
SCALE	DATE	DRAWING NO.	CUSTOMER:	DRAWN:	DRAWN:	SHEET:	REV.
1/2:1	5/13/04	CW1424Q80MKRNP	-	DFLA	DFLA	1 OF 1	1

*25°C AMBIENT WITH A MAXIMUM CASE TEMPERATURE OF 100°C ON THE MOTOR. THERMOSTAT IN STATOR WILL OPEN IF STATOR TEMPERATURE EXCEEDS 155°C. THIS WILL GIVE YOU ~10% HEADROOM IN THE CONTINUOUS TORQUE RATING BEFORE THERMOSTAT OPENS. MOTOR MOUNTED ON A 305 X 305 X 12.7MM ALUMINUM HEATSINK.