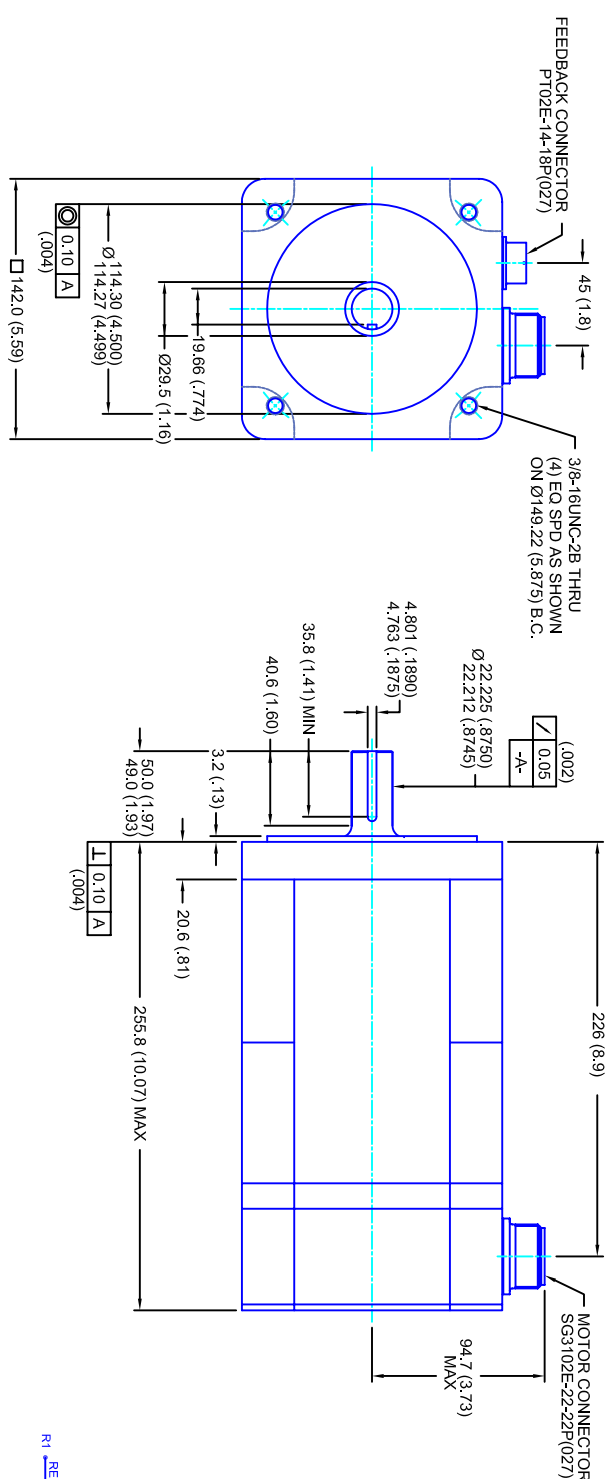


REVISIONS			
REV	DESCRIPTION	DATE	APPD
1	QUOTE DRAWING	9/7/05	



- NOTES:**
1. MILLIMETERS (INCHES)
 2. AXIAL LOAD: 23 KG [50 LBS] MAX
 3. RADIAL LOAD: 68 KG [150 LBS] MAX @ 25.4MM [1.00] FROM FACE
 4. MOTOR SEALED TO IP65
 5. MOTOR SHAFT: 416 STAINLESS STEEL
 6. MOTOR FINISH: BLACK MATT FINISH
 7. MOTOR WEIGHT: 13 KG [33 LBS]

ELECTRICAL DATA

MOTOR PARAMETERS	UNITS/MEASURE	VALUES
VOLTAGE	VOLTS-AC	460
AMP TYPE	-	SINE
HORSEPOWER	HP	8.0
KILOWATTS	KW	6.0
MAX OPERATING SPEED	RPM	5000
SPEED @ RATED TORQUE	RPM	4400
*CONTINUOUS RATED TORQUE @ 4400 RPM	IN-LBS(INM)	115(13.0)
*CONTINUOUS STALL TORQUE	IN-LBS(INM)	130(14.7)
*CONTINUOUS LINE CURRENT	AMPS(RMS/Φ)	11.7
PEAK TORQUE	IN-LBS(INM)	390(44.1)
PEAK CURRENT	AMPS(RMS/Φ)	35.1
MAX THEORETICAL ACCEL.	RAD/SEC ²	35.135
TORQUE SENSITIVITY	KI [N-LBS/AMP/RMS/Φ]/(MM/AMP/RMS/Φ)	11.1-[1.26]
BACK EMF (LINE TO LINE)	Vrms/Krpm	70
D.C. RESISTANCE (P-P)	OHMS	.54
INDUCTANCE (P-P)	MILLIHENRIES	3.3
ROTOR INERTIA	IN-LBS-SEC ² [KG-M ²]	.0111[.00125]
STATIC FRICTION	TT	2.4[0.27]

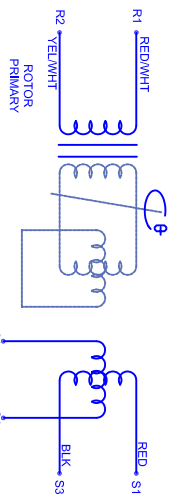
CONNECTION CHART

PT02E-14-18P(027)

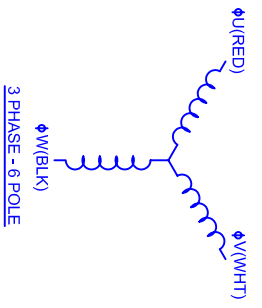
REST/HERM WIRE LEADS	WIRE FUNCTION	WIRE COLOR
RES	-	-
A	-	-
B	-	-
C	-	-
D	RES SHLD	WHT/BLK
E	REF	RED/WHT
F	SIN GND	YEL
G	COS GND	BLK
H	SIN	BLU
J	-	-
K	-	-
L	-	-
M	-	-
N	THERM	WHT
P	-	-
R	REF GND	YEL/WHT
S	COS	RED
T	-	-
U	THERM	WHT

SG3102E-22-22P(027)

MOTOR WIRE LEADS	WIRE FUNCTION	WIRE COLOR
A	ΦU	RED
B	ΦV	WHT
C	ΦW	BLK
D	PE GND	GRN/YEL



SCHEMATIC FOR BRUSHLESS RESOLVER



142MM - 1 STK
460V/KE-70/ENG/RES/CONN

TOLERANCES UNLESS SPECIFIED	
BORER:	= H12
BORE:	= H7
DECIMAL .xxx	± .12 (.005)
DECIMAL .xx	± .25 (.020)
DECIMAL .x	± .51 (.020)
ANGLE	± .03
ANGLE (MM INCHES)	± .03

REMOVE ALL BURRS/BREAK SHARP EDGES AS SHOWN (0.10°)

PROPRIETARY RIGHTS OF CUSTOM MOTORS ARE INCLUDED IN THE INFORMATION DISCLOSED HEREIN. THIS INFORMATION DOES NOT BE REPRODUCED OR TRANSMITTED IN ANY FORM OR BY ANY MEANS, ELECTRONIC OR MECHANICAL, INCLUDING PHOTOCOPYING, RECORDING, OR BY ANY INFORMATION STORAGE AND RETRIEVAL SYSTEM.

CUSTOMER: - DATE: 9/7/05 DRAWING NO: CM1421R70EKRC3 DRAWN: DFLA SHEET: 1 OF 1

SCALE: 1/2:1

*25°C AMBIENT WITH A MAXIMUM CASE TEMPERATURE OF 100°C ON THE MOTOR. THERMOSTAT IN STATOR WILL OPEN IF STATOR TEMPERATURE EXCEEDS 155°C. THIS WILL GIVE YOU ~10% HEADROOM IN THE CONTINUOUS TORQUE RATING BEFORE THERMOSTAT OPENS. MOTOR MOUNTED ON A 305 X 305 X 12.7MM ALUMINUM HEAT-SINK.