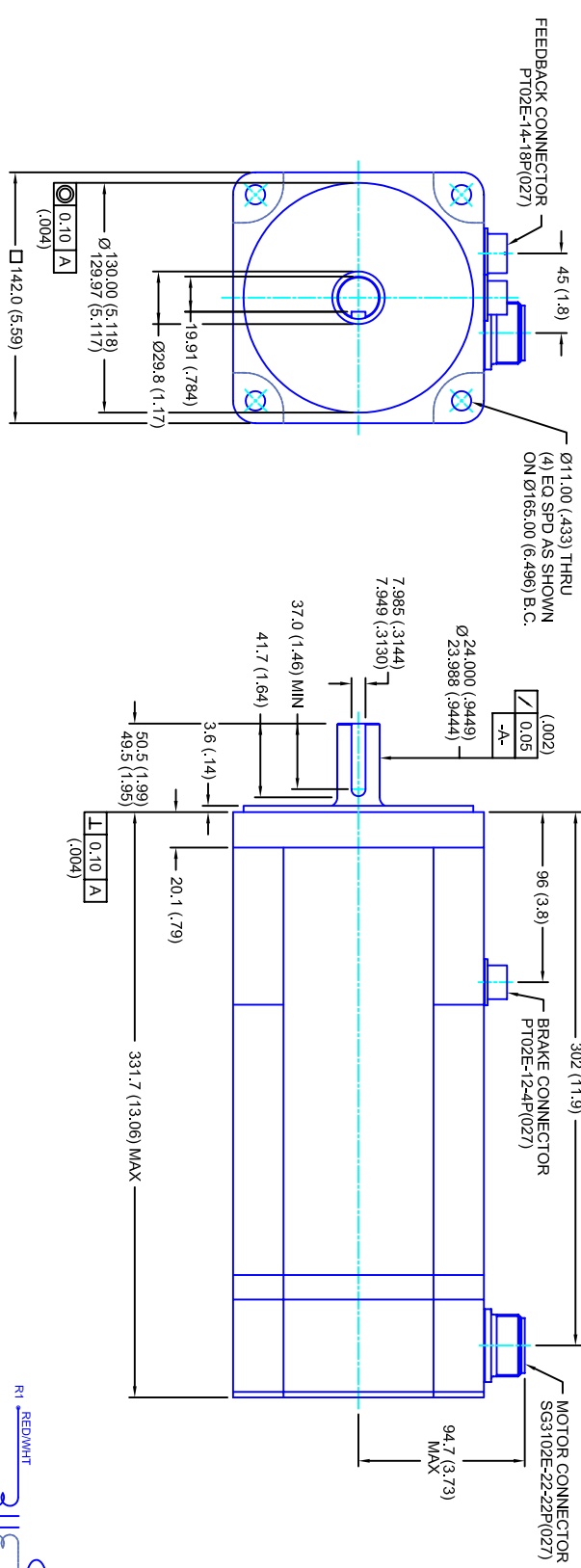


REVISIONS			
REV	DESCRIPTION	DATE	APPD
1	QUOTE DRAWING	9/7/04	



- NOTES:**
1. MILLIMETERS (INCHES)
 2. AXIAL LOAD: 23 KG [50 LBS] MAX
 3. RADIAL LOAD: 68 KG [150 LBS] MAX @ 25.4MM [1.00] FROM FACE
 4. MOTOR SEALED TO IP65
 5. MOTOR SHAFT: 416 STAINLESS STEEL
 6. MOTOR FINISH: BLACK MATT FINISH
 7. MOTOR WEIGHT xx KG [xx LBS]

ELECTRICAL DATA

MOTOR PARAMETERS	UNITS/MEASURE	VALUES
VOLTAGE	VOLTS-AC	460
AMP TYPE	-	SINE
HORSEPOWER	HP	4.9
KILOWATTS	KW	3.6
MAX OPERATING SPEED	RPM	3400
SPEED @ RATED TORQUE	RPM	2800
*CONTINUOUS RATED TORQUE @ 2800 RPM	IN-LBS[INm]	110[12.4]
*CONTINUOUS STALL TORQUE	IN-LBS[INm]	130[14.7]
*CONTINUOUS LINE CURRENT	AMPS[RMS/Φ]	7.1
PEAK TORQUE	IN-LBS[INm]	390[44.1]
PEAK CURRENT	AMPS[RMS/Φ]	21.3
TORQUE SENSITIVITY	RAD/SEC ²	33.913
MAX THEORETICAL ACCEL.	KI [N-BS/AMP/RMS/Φ][IN-AMP/ENIS/Φ]	18.3[2.06]
BACK EMF (LINE TO LINE)	Vrms/Krpm	115
D.C. RESISTANCE (P-P)	OHMS	1.5
INDUCTANCE (P-P)	MILLIHENRIES	10
ROTOR INERTIA	IN-LBS-SEC ² [KG-M ²]	.0115[.00130] w/BK
STATIC FRICTION	TT	2.4[0.27]

CONNECTION CHART

REST/HEAT WIRE LEADS	WIRE FUNCTION	WIRE COLOR
A	-	-
B	-	-
C	-	-
D	RES SHLD	WHT/BLK
E	REF	RED/WHT
F	SIN GND	YEL
G	COS GND	BLK
H	SIN	BLU
J	-	-
K	-	-
L	-	-
M	-	-
N	THERM	WHT
P	-	-
R	REF GND	YEL/WHT
S	COS	RED
T	-	-
U	THERM	WHT

SG3102E-22-22P(027)

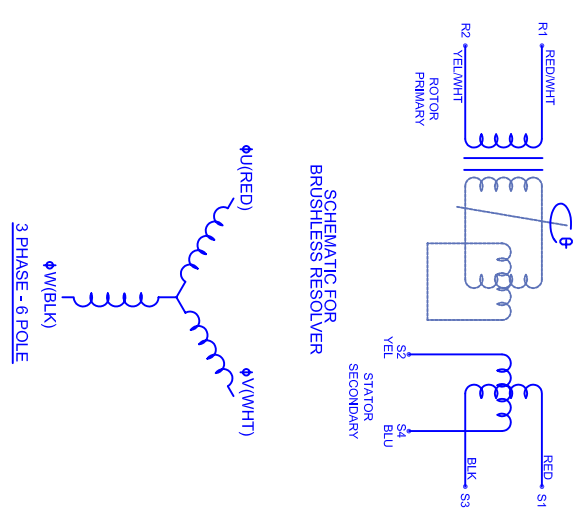
MOTOR WIRE LEADS	WIRE FUNCTION	WIRE COLOR
A	ΦV	RED
B	ΦV	WHT
C	ΦW	BLK
D	PE GND	GRN/YEL

PT02E-12-4P(027)

BRAKE WIRE LEADS	WIRE FUNCTION	WIRE COLOR
A	BRK (+)	RED
B	BRK (-)	BLK
C	-	-
D	-	-

BRAKE INFO:
 INPUT VOLTAGE: 24 VDC
 HOLDING FORCE: 40.7 Nm [360 IN-LBS] MAX
 CURRENT DRAW: 1.13 AMPS
 RELEASING TIME: 100 ms
 INERTIA: .00041 IN-LBS-SEC²

SCHEMATIC FOR BRUSHLESS RESOLVER



TOLERANCES UNLESS SPECIFIED

BORE: ±.012 (0.05) ✓
 DECIMAL .xxx
 DECIMAL .xx ±.005 (0.20)
 DECIMAL .x ±.01 (0.40)
 ANGLE: ±0.50

REMOVE ALL BURRS/BREAK SHARP EDGES, ZAMER (0.10")

PROPRIETARY RIGHTS OF CUSTOMERS ARE INCLUDED IN THE INFORMATION PROVIDED HEREIN. THIS INFORMATION IS NOT TO BE REPRODUCED OR TRANSMITTED IN ANY FORM OR BY ANY MEANS, ELECTRONIC OR MECHANICAL, INCLUDING PHOTOCOPYING, RECORDING, OR BY ANY INFORMATION STORAGE AND RETRIEVAL SYSTEM.

CUSTOM MOTORS INC

460V/KE=115/METRES/CONN/BRK

142MM - 1 STK

CUSTOMER: - DRAWING NO. CM1421R115MKRCSB

SCALE: 1/2:1 DATE: 9/7/04

FINISH: WATERL: DRAWN: DFLA SHEET: 1 OF 1

REV. 1