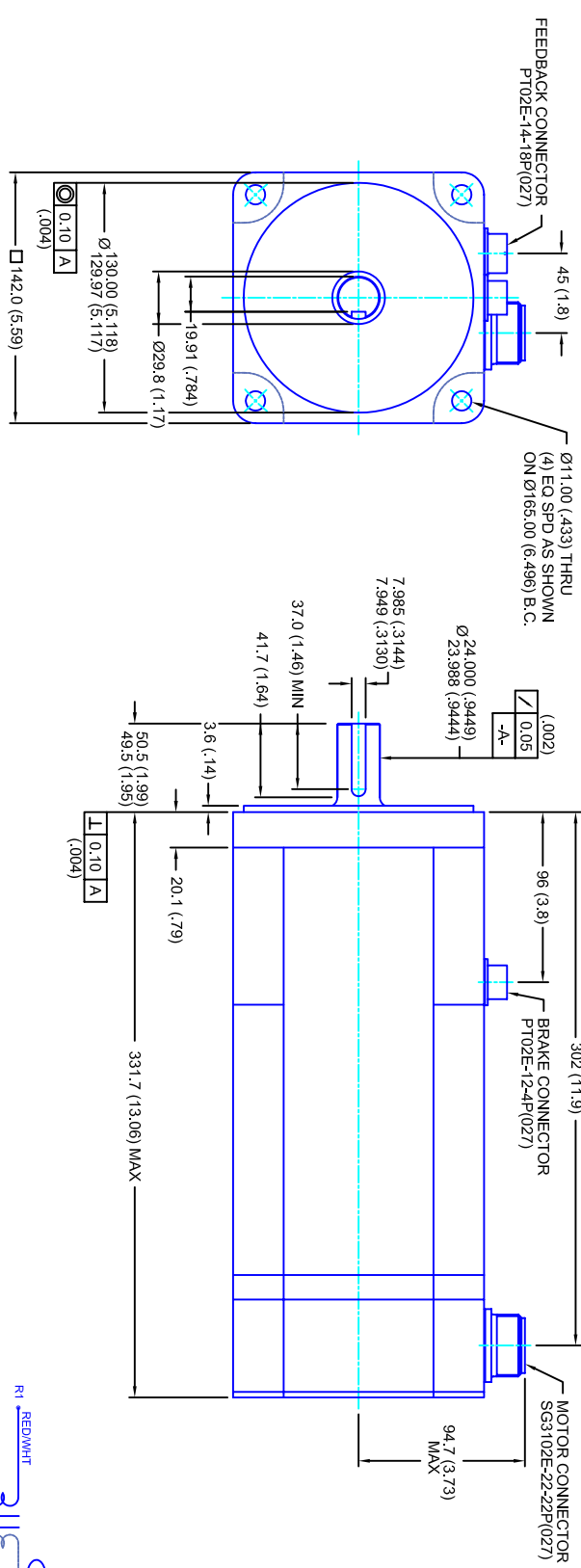


REVISIONS			
REV	DESCRIPTION	DATE	APPD
1	RELEASE DRAWING	12/7/05	



- NOTES:**
1. MILLIMETERS (INCHES)
 2. AXIAL LOAD: 23 KG [50 LBS] MAX
 3. RADIAL LOAD: 68 KG [150 LBS] MAX @ 25.4MM [1.00] FROM FACE
 4. MOTOR SEALED TO IP65
 5. MOTOR SHAFT: 416 STAINLESS STEEL
 6. MOTOR FINISH: BLACK MATT FINISH
 7. MOTOR WEIGHT: 20 KG [44 LBS]

ELECTRICAL DATA

MOTOR PARAMETERS	UNITS/MEASURE	VALUES
VOLTAGE	VOLTS-AC	230
AMP TYPE	-	SINE
HORSEPOWER	HP	4.4
KILOWATTS	KW	3.3
MAX OPERATING SPEED	RPM	2700
SPEED @ RATED TORQUE	RPM	2400
*CONTINUOUS RATED TORQUE @ 2400 RPM	IN-LBS(INM)	115(13.0)
*CONTINUOUS STALL TORQUE	IN-LBS(INM)	2400
*CONTINUOUS LINE CURRENT	AMPS(RMS/Φ)	130(14.7)
PEAK TORQUE	IN-LBS(INM)	390(44.1)
PEAK CURRENT	AMPS(RMS/Φ)	35.1
TORQUE SENSITIVITY	RAD/SEC ²	33.913
MAX THEORETICAL ACCEL.	KI [N-BS/AMP/RMS/Φ] [N/M/AMP/ENIS/Φ]	11.1 [1.26]
BACK EMF (LINE TO LINE)	Vrms/Krpm	70
D.C. RESISTANCE (P-P)	OHMS	.54
INDUCTANCE (P-P)	MILLIHENRIES	3.5
ROTOR INERTIA	IN-LBS-SEC ² [KG-M ²]	.0115(.00130) W/Brk
STATIC FRICTION	TT	2.4(0.27)

CONNECTION CHART

REST/HERM WIRE LEADS	WIRE FUNCTION	WIRE COLOR
A	-	-
B	-	-
C	-	-
D	RES SHLD	WHT/BLK
E	REF	RED/WHT
F	SIN GND	YEL
G	COS GND	BLK
H	SIN	BLU
J	-	-
K	-	-
L	-	-
M	-	-
N	THERM	WHT
P	-	-
R	REF GND	YEL/WHT
S	COS	RED
T	-	-
U	THERM	WHT

SG3102E-22-22P(027)

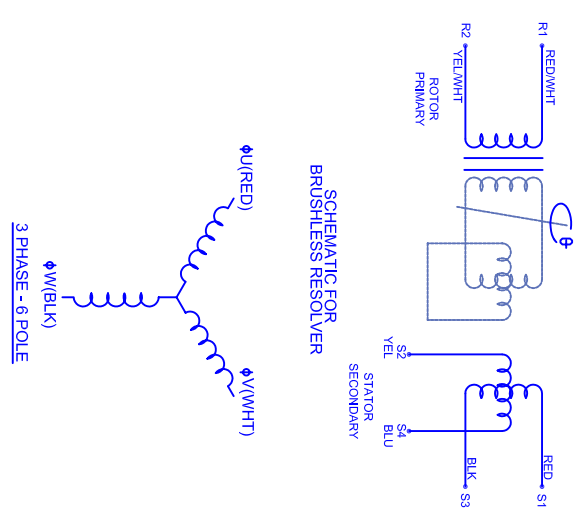
MOTOR WIRE LEADS	WIRE FUNCTION	WIRE COLOR
A	ΦV	RED
B	ΦV	WHT
C	ΦW	BLK
D	PE GND	GRN/YEL

PT02E-12-4P(027)

BRAKE WIRE LEADS	WIRE FUNCTION	WIRE COLOR
A	BRK (+)	RED
B	BRK (-)	BLK
C	-	-
D	-	-

BRAKE INFO:
 INPUT VOLTAGE: 24 VDC
 HOLDING FORCE: 40.7 Nm [360 IN-LBS] MAX
 CURRENT DRAW: 1.13 AMPS
 RELEASING TIME: 100 ms
 INERTIA: .00041 IN-LBS-SEC²

SCHEMATIC FOR BRUSHLESS RESOLVER



TOLERANCES UNLESS SPECIFIED

BORE:	= H12	✓
DECIMAL .xxx	± .12 (005)	
DECIMAL .xx	± .25 (020)	
DECIMAL .x	± .51 (020)	
DECIMAL	± .40 (016)	
ANGLE (MM (INCHES))	± .030	

REMOVE ALL BURRS, BREAK SHARP EDGES, ZAMER (010) FINISH: -



142MM - 1 STK
230V/KE=70/MET/RES/CONN/BRK

SCALE	DATE	DRAWING NO.	CUSTOMER:	DRAWN:	SHEET:	REV.
1/2:1	2/5/04	CM1421Q70MKRCSB	-	DFLA	1 OF 1	1