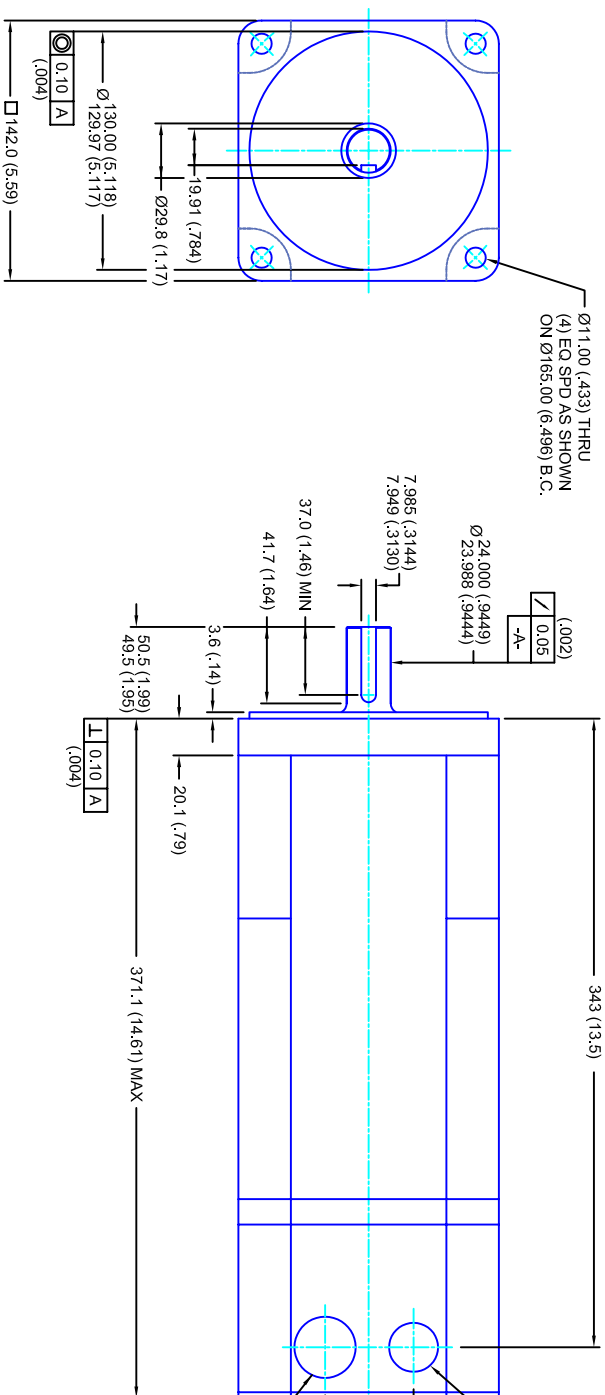


REVISIONS			
REV	DESCRIPTION	DATE	APPD
1	QUOTE DRAWING	9/7/04	



- NOTES:**
1. MILLIMETERS (INCHES)
 2. AXIAL LOAD: 23 KG [50 LBS] MAX
 3. RADIAL LOAD: 68 KG [150 LBS] MAX @ 25.4MM [1.00] FROM FACE
 4. MOTOR SEALED TO IP65
 5. MOTOR SHAFT: 416 STAINLESS STEEL
 6. MOTOR FINISH: BLACK MATT FINISH
 7. MOTOR WEIGHT 21 KG [46 LBS]

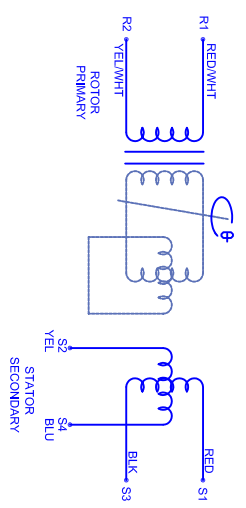
ELECTRICAL DATA

MOTOR PARAMETERS	UNITS/MEASURE	VALUES
VOLTAGE	VOLTS-AC	230
AMP TYPE	-	SINE
HORSEPOWER	HP	2.9
KILOWATTS	KW	2.1
MAX OPERATING SPEED	RPM	1760
SPEED @ RATED TORQUE	RPM	1500
*CONTINUOUS RATED TORQUE @ 1500 RPM	IN-LBS(IN)M	120(13.6)
*CONTINUOUS STALL TORQUE	IN-LBS(IN)M	130(14.7)
CONTINUOUS LINE CURRENT	AMPS(RMS/Φ)	7.1
PEAK TORQUE	IN-LBS(IN)M	390(44.1)
PEAK CURRENT	AMPS(RMS/Φ)	21.3
MAX THEORETICAL ACCEL.	RAD/SEC ²	33.913
TORQUE SENSITIVITY	KI [N-LS/AMP/RMS/Φ] [IN-AMP/RMS/Φ]	18.3(2.06)
BACK EMF (LINE TO LINE)	Vrms/Krpm	115
D.C. RESISTANCE (P-P)	OHMS	1.5
INDUCTANCE (P-P)	MILLIHENRIES	10
ROTOR INERTIA	IN-LBS-SEC ² [KG-M ²]	.0115(.00130) w/ Bk
STATIC FRICTION	TT	2.4(0.27)

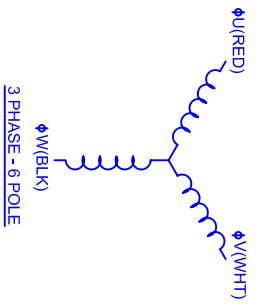
CONNECTION CHART

RES/THERM WIRE LEADS	WIRE FUNCTION	WIRE COLOR
R1	GND/SHLD	WHT/BLK
R2	THERM	WHT
R3	THERM	WHT
R4	SIN GND	YEL
R5	COS GND	BLK
R6	COS	RED
R7	SIN	BLU
R8	REF	RED/WHT
R9	REF GND	YEL/WHT
R10	BRK (-)	BLK
R11	BRK (+)	RED

BRAKE INFO:
 INPUT VOLTAGE: 24 VDC
 HOLDING FORCE: 40.7 Nm [360 IN-LBS] MAX
 CURRENT DRAW: 1.13 AMPS
 RELEASE TIME: 100 ms
 INERTIA: .00041 IN-LBS-SEC²



SCHEMATIC FOR BRUSHLESS RESOLVER



3 PHASE - 6 POLE

TOLERANCES UNLESS SPECIFIED

BORE: = H7
 DECIMAL .xxx = ±.012 (0.05)
 DECIMAL .xx = ±.025 (0.10)
 DECIMAL .x = ±.051 (0.20)
 FRACTION = ±.001 (0.05)
 ANGLE (MM/INCHES) = ±.030

REMOVE ALL BURRS/BREAK SHARP EDGES/AS SHOWN (0.10°)

PROPRIETARY RIGHTS OF CUSTOM MOTORS ARE INCLUDED IN THE INFORMATION DISCLOSED HEREIN. THIS INFORMATION IS NOT TO BE REPRODUCED OR TRANSMITTED IN ANY FORM OR BY ANY MEANS, ELECTRONIC OR MECHANICAL, INCLUDING PHOTOCOPYING, RECORDING, OR BY ANY INFORMATION STORAGE AND RETRIEVAL SYSTEM.

CUSTOM MOTORS INC

142MM - 1 STK

230V/KE=115M/ET/RES/NPT/BRK

CUSTOMER: - DATE: 9/7/04 DRAWING NO: CM1421Q115MKRNPBTB

SCALE: 1/2:1

FINISH: -

WATERIAL: -

DRAWN: DFLA SHEET: 1 OF 1

REV: 1