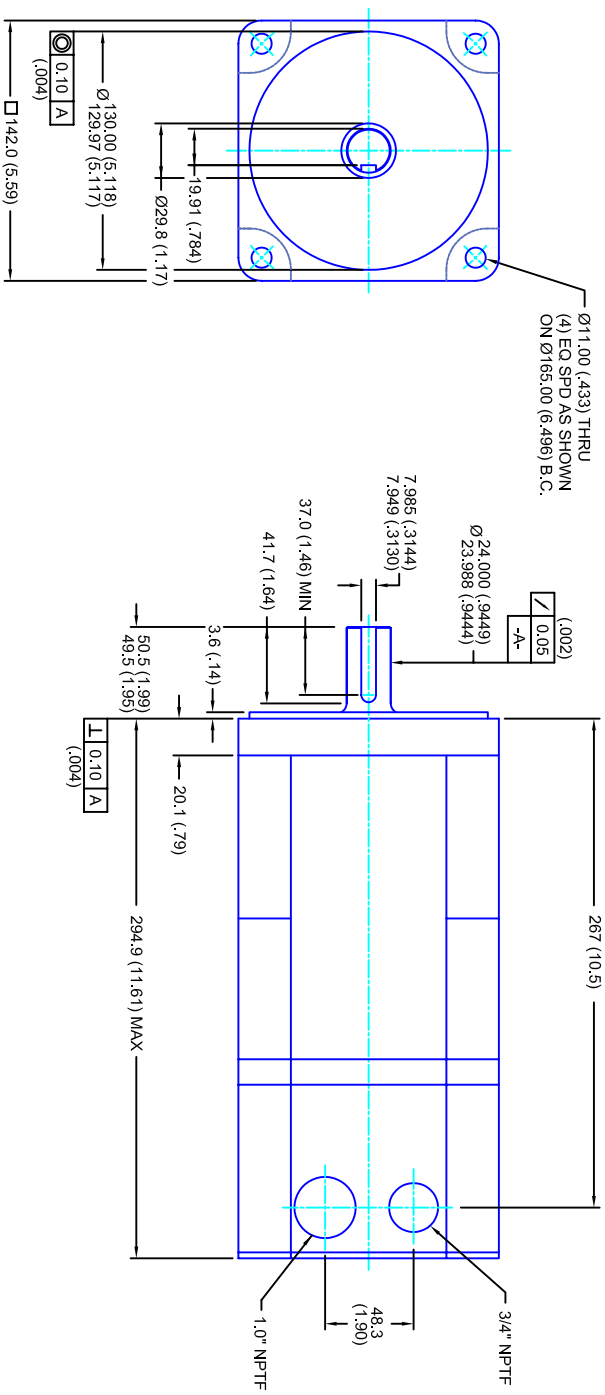


REVISIONS			
REV	DESCRIPTION	DATE	APPD
1	QUOTE DRAWING	9/7/04	



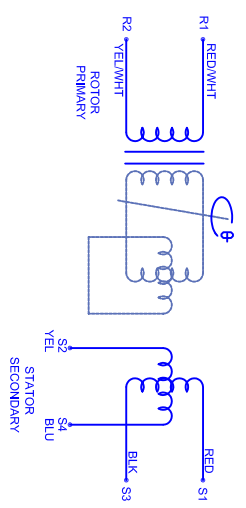
- NOTES:**
1. MILLIMETERS (INCHES)
  2. AXIAL LOAD: 23 KG [ 50 LBS ] MAX
  3. RADIAL LOAD: 68 KG [ 150 LBS ] MAX @ 25.4MM [ 1.00 ] FROM FACE
  4. MOTOR SEALED TO IP65
  5. MOTOR SHAFT: 416 STAINLESS STEEL
  6. MOTOR FINISH: BLACK MATT FINISH
  7. MOTOR WEIGHT: 16 KG [ 35 LBS ]

**ELECTRICAL DATA**

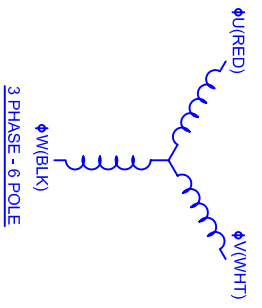
MOTOR PARAMETERS	UNITS/MEASURE	VALUES
VOLTAGE	VOLTS-AC	230
AMP TYPE	-	SINE
HORSEPOWER	HP	2.9
KILOWATTS	KW	2.1
MAX OPERATING SPEED	RPM	1750
SPEED @ RATED TORQUE	RPM	1500
*CONTINUOUS RATED TORQUE @ 1500 RPM	IN-LBS(INM)	120(13.6)
*CONTINUOUS STALL TORQUE	IN-LBS(INM)	130(14.7)
CONTINUOUS LINE CURRENT	AMPS(RMS/Φ)	7.1
PEAK TORQUE	IN-LBS(INM)	390(44.1)
PEAK CURRENT	AMPS(RMS/Φ)	21.3
MAX THEORETICAL ACCEL.	RAD/SEC <sup>2</sup>	35,135
TORQUE SENSITIVITY	IN-LBS/AMP(RMS/Φ)/IN-AMP(RMS/Φ)	18.3(2.06)
BACK EMF (LINE TO LINE)	Vrms/Krpm	115
D.C. RESISTANCE (P-P)	OHMS	1.5
INDUCTANCE (P-P)	MILLIHENRIES	10
ROTOR INERTIA	IN-LBS-SEC <sup>2</sup> [KG-M <sup>2</sup> ]	.011(1.00125)
STATIC FRICTION	FT	2.4(0.27)

**CONNECTION CHART**

TERM	WIRE FUNCTION	WIRE COLOR	TERM	WIRE FUNCTION	WIRE COLOR
R1	GND/SHLD	WHT/BLK	1	Φ U	RED
R2	THERM	WHT	2	Φ V	WHT
R3	THERM	WHT	3	Φ W	BLK
R4	SIN GND	YEL	4	PE GND	GRN/YEL
R5	COS GND	BLK			
R6	COS	RED			
R7	SIN	BLU			
R8	REF	RED/WHT			
R9	REF GND	YEL/WHT			
R10	-	-			
R11	-	-			



**SCHEMATIC FOR BRUSHLESS RESOLVER**



**3 PHASE - 6 POLE**

TOLERANCES UNLESS SPECIFIED	
BORER:	= H2
DRILL:	= H7
DECIMAL .xxx	± .12 (005)
DECIMAL .xx	± .25 (010)
DECIMAL .x	± .51 (020)
ANGLE	± .01 (016)
ANGLE	± .030

REMOVE ALL BURRS/BREAK SHARP EDGES AS SHOWN (0.10°)

PROPRIETARY RIGHTS OF CUSTOM MOTORS ARE INCLUDED IN THE INFORMATION DISCLOSED HEREIN. THIS INFORMATION IS NOT TO BE REPRODUCED OR TRANSMITTED IN ANY FORM OR BY ANY MEANS, ELECTRONIC OR MECHANICAL, INCLUDING PHOTOCOPYING, RECORDING, OR BY ANY INFORMATION STORAGE AND RETRIEVAL SYSTEM.

CUSTOMER: -

SCALE: 1/2:1

DATE: 9/7/04

DRAWING NO.: CM1421Q115MKRNP

DRAWN: DFLA

SHEET: 1 OF 1

REV: 1



**142MM - 1 STK**  
**230V/KE=115M/TRES/NPT**

\*25°C AMBIENT WITH A MAXIMUM CASE TEMPERATURE OF 100°C ON THE MOTOR. THERMOSTAT IN STATOR WILL OPEN IF STATOR TEMPERATURE EXCEEDS 155°C. THIS WILL GIVE YOU ~10% HEADROOM IN THE CONTINUOUS TORQUE RATING BEFORE THERMOSTAT OPENS. MOTOR MOUNTED ON A 305 X 305 X 12.7MM ALUMINUM HEATSINK.